



Bournemouth, Christchurch, and Poole

School Funding Consultation 2023-24

Issued: Friday 11 November 2022

Consultation closes Friday 2 December 2022

Please respond to the consultation on-line

<https://online1.snapsurveys.com/yiouj5>

CONTENTS

1. Introduction
2. School Funding for BCP 2023-24
3. National Funding Formula 2023-24
4. National Formula Applied to BCP Schools 2023-24
5. The High Needs Block
6. Transfer of Mainstream Funding to High Needs and Local Formula Options
7. Formula Affordability – Impact of Final Data
8. Growth Fund
9. Central Schools Services Block – Services for all Schools
10. Conclusion and Next Steps

Appendix 1	National Funding Formula 2023-24 for BCP Schools
Appendix 2	High Needs Spend Forecast
Appendix 3	Local Formula Options 2023-24
Appendix 4	Growth Fund Policy
Appendix 5	Summary of Consultation Questions
Appendix 6	Glossary of Terms

1. Introduction

This consultation concerns funding allocations through the dedicated schools grant (DSG) for the financial year 2023-24 only. It contains the detail of the DfE national school funding system and how it is planned to be implemented locally.

The DSG is allocated through four separate funding blocks to support expenditure on early years, mainstream schools, pupils with high needs and central school services. There are few changes for next year in the allocation of this grant to the council apart from updated funding values in the national funding formula (NFF) for each funding block.

There is a separate local consultation for early years underway, including for nursery classes in mainstream schools. This document, therefore, considers only the national changes and local proposals for the remaining three DSG funding blocks.

1.1. Schools National Funding Formula (NFF) 2023-24

The BCP formula set for 2023-24 will be effective for maintained schools from April 2023 and for academies from September 2023. The NFF was adopted as the local formula for mainstream schools from 2020-21 and this has continued up to the current year 2022-23. The national requirements for next year are that all local formulae are to move towards the NFF formula factors, methods, and unit values. Those that had already adopted the NFF in the current year can deviate from the 2023-24 NFF within a limited range of unit values (above or below the NFF).

The 2023-24 NFF for mainstream schools is described in section 3, the local context considered in section 4 and the individual school impact detailed in Appendix 1. The school level allocations through the local formula differ from those announced by the government through the NFF predominantly from protecting schools against the 2022-23 NFF baselines (including the supplementary grant), whilst application through the local formula protects schools against their actual 2022-23 local allocations. In some instances, for academies different pupil numbers may have been used in the calculations by the DfE.

It is important to note in considering funding levels that the NFF uses data from the October 2021 school census (lagged) to provide funding to the LA for mainstream schools, but the local formula must use the equivalent data from October 2022.

During December 2022 the Education Skills Funding Agency (ESFA) will provide the October 2022 mainstream school data to enable final budgets to be calculated and overall affordability of our proposals to be assessed. Data movements could make the proposed formula unaffordable. A method to adjust the formula when final data is received from the ESFA is considered in section 7.

1.2. High Needs Budget Pressures

High needs budgets include funding for special schools, alternative provision, and pupils with high needs in mainstream schools and further education (FE) colleges. It has been clear since the inception of BCP that the continuing growth in demand for Education Health and Care Plans (EHCPs) is unaffordable within the high needs allocations from the DfE or as supplemented by any surplus amount from the schools block. New places in state provision have been created since April 2019 but this has not been sufficient to meet demand with further reliance on non-state provision, which in most cases is more expensive.

The new banding system with increased funding levels implemented from November 2022 for mainstream schools should enable more pupils to remain in mainstream provision where

appropriate, and there are plans for further specialist places to be created from September 2023.

The government's new Delivering Better Value in SEND (DBV) programme is targeting authorities like BCP with either substantial and/or growing high needs deficits. The aim is to provide help to reform high needs systems to provide effective and sustainable SEND services that will achieve better outcomes for children and young people with SEND. The programme will not include funding to eliminate historic deficits, but the Department is working with us to understand our current action plan to address the annual growing in-year deficit. It has been recognised that the on-going trends for an increase in education, health, and care plans (EHCPs) and rising costs of provision is making balancing the in-year position very challenging.

It remains clear that balancing the high needs budget requires either a significant reduction in the number of EHCPs or a significant increase in funding and there are no current government plans for the latter.

Section 5 considers the high needs block position in detail.

1.3. Funding Transfer to High Needs 2023-24

Schools Forum has an important consultation role with oversight of all DSG budgets and will need to decide if a level of mainstream school funding is to be transferred to support the growth in pupils with special educational needs and disabilities (SEND) or excluded from mainstream schools. A fresh decision is needed each year. As in previous years, a funding transfer can be agreed by the Schools Forum of up to 0.5% of schools block funding. This is estimated at £1.2 million for 2023-24. A higher level would require the approval of the Secretary of State.

Schools Forum in January 2022 decided for 2022-23 that surplus school block funding (after all schools had received their full NFF allocations) of £0.75 million (0.3%) could be transferred to support high needs. The council did not seek agreement to reduce school budgets below the NFF to allow for the maximum level of transfer. In July, Schools Forum agreed that £0.4 million could be allocated to support the inclusion fund for early years providers. This was due to the growth in children requiring additional support in this age group, the low funding increase for early years provision from government and the high value placed on the work of the sector. The remaining £0.35 million transferred remains unallocated and available to offset the high needs deficit.

Surplus funding in 2023-24 is again expected to be less than the 0.5% permitted. This paper is presenting options to achieve a higher level of transfer by not adopting the NFF in full.

The recently closed national school funding consultation for 2024-25 included proposals for how mainstream schools could be required by the DfE in future to contribute towards the in-year deficit through reduced NFF allocations.

1.4. Local Formula Options

The proposals for the local formula in this consultation consider adjustments to the NFF to raise further funding to transfer to high needs up to 0.5% and beyond. All options require the support of the Schools' Forum, and some also require the additional support of the DfE. Section 6 considers formula options.

1.5. Growth Fund

As in previous years, the Schools Forum is to agree the level of the growth fund and how it is to be allocated to schools with basic need growth. Proposals will be considered by the Schools' Forum in January 2023. Changes were made to the operation of the growth fund for

2020-21 to provide only a proportion of funding if the commissioned place remained unfilled. This change was requested by Schools Forum because a significant proportion of commissioned new places in the previous year had remained unfilled as pupils had gone to other schools. This aspect of the policy remains in place for 2022-23 and no changes are proposed for 2023-24. The growth fund is considered in detail in Section 8.

1.6. Central Schools Services Block

Central schools services include support to all schools for a range of services, charges from the DfE over which locally there is no control (copyright licenses) and other statutory services supporting individual pupils or the schools funding system overall. The proposal to the Schools Forum will be that the budget overall is to be set at the level of funding received. The allocation to individual central budgets will be considered and agreed by the Schools Forum in January 2023. This is covered in more detail in section 9.

1.7. Services for Maintained Schools

As in previous years a contribution is being sought from maintained school budget shares to fund the council's statutory duties in support of these schools through a central retention. Proposals will also include continued de-delegation from budget shares to fund school improvement activity now that the separate grant to the council has been fully phased out. Children's services are undertaking a separate consultation on these proposals.

1.8. Next Steps

We will be hosting an MS Teams virtual event on Thursday 24 November 2022 at 4pm

An invitation to this meeting will be sent out and if you have not received it, please contact sally.oreilly@bcpcouncil.gov.uk

If you have any questions relating to this event or the consultation more generally, please contact:

nicola.webb@bcpcouncil.gov.uk

To respond to the consultation please complete the response in the link provided.

The Schools Forum on 16 January 2023 will make its recommendation to the Council on the mainstream school's formula and make decisions regarding the other budgets included in the consultation. At the same meeting final budget decisions will be made concerning any transfer of mainstream school funding to support high needs budgets. The Council meeting on 21 February 2023 is scheduled to consider the outcome of this consultation with all schools and the recommendations of the Schools Forum. The mainstream schools' formula for 2023-24 will be agreed at this meeting.

All final mainstream school budgets and the level and detail of the growth fund are to be provided to the ESFA by the 20 January 2023.

1.9. Budget Timetable

Consultation Issued	11 November 2022
Consultation Event on Teams	24 November 2022
Consultation Closes	2 December 2022
Schools Forum updated on final formula (updated data applied), recommendations and decisions	16 January 2023
Mainstream school budgets sent to ESFA	20 January 2023
Council agrees local formula and funding transfer	21 February 2023

This document has been distributed to all Headteachers and Chairs of Governors in mainstream, special and alternative provision across BCP.

2. School Funding for BCP 2023-24

2.1. DSG Summary

Indicative funding for 2023-24 is based on the same number of pupils as for 2022-23 and compared with the current year changes are as follows:

- Schools block funding is increasing by £3.7 million (1.5%).
- Funding rate for the central school services block for on-going council functions has reduced by 1.3%
- High needs block allocations provide an increase of £3.0 million (5.6%)

Amounts are included in table 1 below:

Table 1: DSG Settlement 2023-24 (based on October 2021 census pupils)

Funding Block	Actual 2022-23	Forecast 2023-24	Annual Change	
	£000's	£000's	£000's	%
Schools NFF	241,535	245,275	3,740	1.55%
Premises	1,699	1,705	6	
Schools Block	243,234	246,980	3,746	1.54%
Central Services NFF	1,745	1,722	-23	-1.3%
Commitments (assumed restored)	291	291	0	0
Central School Services	2,036	2,013	-23	-1.1%
High Needs	54,010	56,593	2,583	4.8%
DSG Funding (excluding early years)	299,280	305,586	6,306	2.1%

Growth funding for basic need places will be announced in the December 2022 Settlement

Some elements of funding are now fixed but those allocated according to pupil numbers will be updated in December to reflect the October 2022 school census along with the growth fund allocation and small changes to high needs to take account of recent changes. Further adjustments will be made to high needs funding in summer 2023 to account for changes in the cross-border flow of high needs pupils at the January 2023 census.

2.2. Schools Block Funding for Mainstream Schools

The Schools Block comprises 3 funding elements:

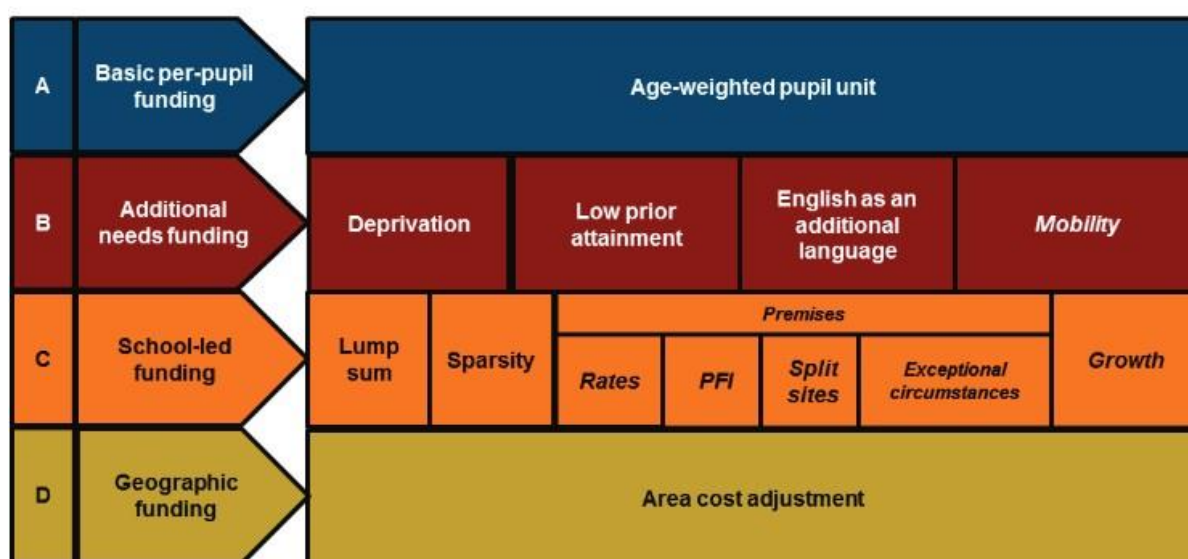
- Schools National Formula (NFF)** with separate primary and secondary per pupil funding levels. The NFF has been applied to the 2022-23 data for each school, the outcome being amalgamated and divided by pupil numbers to derive the primary and secondary unit funding levels to the council.
- Local formula elements outside of the national formula.** This is provided at the historic (now 2022-23) budgeted level. This includes business rates (funded at cost to all schools) and exceptional premises factor (joint use agreements for 2 schools, split site factor for 2 schools).
- Growth fund allocations for basic need pupil growth.** The DfE allocate growth funding using demographic data with limited protection against significant reductions.

3. National Funding Formula (NFF) for 2023-24

3.1. Summary of Formula

The 2023-24 NFF is unchanged compared with the current year. Figure 1 below shows the formula elements that constitute the NFF. In addition to these factors, the formula includes protection arrangements for individual schools to provide a **minimum increase per pupil** (against the 2022-23 NFF baseline), and an absolute minimum per pupil funding level, considering the age range of the schools.

Figure 1: The building blocks and factors in the national funding formula for schools



Note that the area cost adjustment in Figure 1 is not relevant for BCP as a low-cost area. The PFI factor is also not relevant.

The level of funding through the NFF for individual schools is used to derive the Primary and Secondary unit values for the BCP allocation.

The detail of the factors is included in the operational guidance on the link below.

<https://www.gov.uk/government/publications/pre-16-schools-funding-local-authority-guidance-for-2023-to-2024/schools-operational-guide-2023-to-2024>

with further information available in the [NFF technical note](#).

3.2. National Implementation of the Schools NFF to date

Most local authorities have moved towards the NFF since its introduction in 2018-19, with 112 out of the 150 local authorities in England by 2022-23 having moved all the factor values in their local formulae closer to the NFF. Of these, 74 local authorities (including BCP) are now mirroring the NFF funding factors almost exactly.

3.3. Summary of NFF Changes 2023-24

NFF Factors

The funding factors used in the 2023-24 schools national formula remain the same as last year.

NFF Funding Values

Nationally, funding for mainstream schools through the schools NFF is increasing by 1.9% per pupil compared with 2022-23. The BCP increase is less than the national average due to the low increase for schools drawing pupils from relatively affluent areas.

The main updates in the schools NFF for 2023-24 are as follows:

- a) The core factors in the schools NFF (such as basic per-pupil funding, and the lump sum that all schools attract) will increase by 2.4%.
- b) Funding for disadvantaged pupils will see greater increases with funding for two deprivation factors in the NFF increasing by a greater amount than other factors. These two factors (the FSM6 factor and the IDACI factor) will increase by 4.3% compared with their 2022-23 values.
- c) The funding floor, NFF equivalent of the minimum funding guarantee (MFG) in the local formula, will ensure that every school attracts at least 0.5% more pupil-led funding per pupil compared with its 2022-23 NFF allocation. However, note that in the local formula the minimum funding guarantee can be set lower between 0% and 0.5%.
- d) The minimum per pupil funding levels (MPPFLs) will also increase by 0.5% compared with 2022-23. This will mean that next year, every primary school will be allocated at least £4,405 per pupil, and every secondary school at least £5,715, with middle and all through school calculations based on their specific year groups.
- e) The 2022-23 schools supplementary grant has been rolled into the schools NFF. Adding the grant funding to the NFF ensures that this additional funding forms part of schools' core budgets and will continue to be provided. The year-on-year increases in the value of the NFF, and the value of NFF factors, have been adjusted to take this into account.

The above arrangements mean that the schools NFF is targeting a greater proportion of funding towards deprived pupils. Schools with pupils in the highest quartile of deprivation (measured by the percentage of pupils who have been eligible for free school meals over the past 6 years) will, on average, attract larger per-pupil funding increases than less deprived schools (some of those schools with more deprived pupils will already be supported by MFG allocations so an increase in funding values will have less impact).

Schools supplementary grant (SSG) 2022-23

This has been rolled into the NFF by:

- a) Adding the amount schools receive through the grant into their baselines.
- b) Adding the value of the lump sum, basic per pupil rates and free school meals Ever 6 (FSM6) parts of the grant onto the respective factors in the NFF.
- c) Uplifting the minimum per pupil values by the supplementary grant's basic per-pupil values, and an additional amount which represents the average amount of funding schools receive from the FSM6 and lump sum parts of the grants

The rolling in of these grants into the schools' NFF allocations will affect the core budgets that maintained schools will receive from April 2023, and that academies will receive from September 2023. To avoid an unfair gap in the support provided to academies, these schools will continue to receive separate grant payments up until the end of August 2023.

3.4. Detail of NFF unit values 2023-24

The detail of NFF unit values is included below in table 2 with a comparison with 2022-23, as adjusted for the schools supplementary grant (SSG) rolled into the NFF.

Table 2: Comparison of Funding Levels 2022-23 and 2023-24

(a) Factors within the NFF

	22-23 NFF unit rate	22-23 SSG unit rate	22-23 Baseline unit rate	23-24 NFF unit rate	% Increase
Primary (Years R-6)	£3,217	£97	£3,314	£3,394	2.4%
Key Stage 3 (Years 7-9)	£4,536	£137	£4,673	£4,785	2.4%
Key Stage 4 (Years 10-11)	£5,112	£155	£5,267	£5,393	2.4%
Primary - FSM	£470		£470	£480	2.1%
Primary - FSM6	£590	£85	£675	£705	4.4%
Primary - IDACI Band F	£220		£220	£230	4.5%
Primary - IDACI Band E	£270		£270	£280	3.7%
Primary - IDACI Band D	£420		£420	£440	4.8%
Primary - IDACI Band C	£460		£460	£480	4.3%
Primary - IDACI Band B	£490		£490	£510	4.1%
Primary - IDACI Band A	£640		£640	£670	4.7%
Secondary – FSM	£470		£470	£480	2.1%
Secondary - FSM6	£865	£124	£989	£1,030	4.1%
Secondary - IDACI Band F	£320		£320	£335	4.7%
Secondary - IDACI Band E	£425		£425	£445	4.7%
Secondary - IDACI Band D	£595		£595	£620	4.2%
Secondary - IDACI Band C	£650		£650	£680	4.6%
Secondary - IDACI Band B	£700		£700	£730	4.3%
Secondary - IDACI Band A	£890		£890	£930	4.5%
Primary - EAL	£565		£565	£580	2.7%
Secondary - EAL	£1,530		£1,530	£1,565	2.3%
Primary - LPA	£1,130		£1,130	£1,155	2.2%
Secondary - LPA	£1,710		£1,710	£1,750	2.3%
Primary - Mobility	£925		£925	£945	2.2%
Secondary - Mobility	£1,330		£1,330	£1,330	0.0%
Lump Sum	£121,300	£3,680	£124,980	£128,000	2.4%
Primary MPPFL	£4,265	£119	£4,384	£4,405	0.5%
KS3 MPPFL	£5,321	£155	£5,476	£5,503	0.5%
KS4 MPPFL	£5,831	£173	£6,004	£6,033	0.5%
MFG			2%	0.5%	

(b) Factors and mechanisms outside the NFF

Factor	2022-23	2023-24
Business Rates	At Cost	At Cost
Joint use agreements (2 schools)	£101,017	£111,460
Split sites (2 schools)	£230,288	£230,288

Schools' business rates will be paid by the ESFA to billing authorities directly on behalf of all state funded schools.

Exceptional premises and split sites factors are funded by the ESFA at historic levels outside the NFF for 2 schools (split site) and 2 different schools (joint use). Their use has previously been agreed by the ESFA based on evidence provided of additional costs of operating over a split site or from the provision of joint use with the community of sports facilities. The increase from last year is due to one school's allocation needing to be increased to comply with the parameters set for the factor. This was established when the individual school budget for other factors had been determined using the updated census data, and as funding through the NFF uses data lagged by one year the increase is not seen until 2023-24.

3.5. MFG – budget change per pupil compared with the previous year

The MFG is important as it provides funding stability between years in the local formula. It must be set between 0% and 0.5% per pupil for 2023-24. It is also to apply to top up funding rates for special schools and alternative provision (although total funding change considers both place and top-up funding) but this MFG can be set at a different level from that used in the mainstream formula. However, it must be set from at least 0%, the same as last year.

Final funding changes for mainstream schools in 2023-24 will be due to differences between the NFF formula values as well as data changes from the October 2022 census. A lower MFG can be used to ensure funding is more aligned to the current underlying data. It also reduces the risk that an individual school's allocation might exceed that provided through the NFF. It is important to note that the MFG in the NFF protects against the NFF LA allocations, while MFG in the local formula protects against 2022-23 BCP formula school allocations (plus supplementary grant allocations), which were slightly different.

Where the operation of the MFG would give rise to an unreasonably high level of protection a request can be made to the ESFA to use an alternative calculation. A fresh disapplication request must be made each year. This process is not expected to be needed in 2023-24.

4. National Formula Applied to BCP Schools 2023-24

4.1. Summary of Funding by Factor

As in previous years, 80% of funding allocated to schools must be through pupil-led factors. The NFF applied to BCP schools allocates over 90%.

National formula allocations by factor for 2023-24 compared with the previous year (based on the 2022-23 pupil numbers and data from the October 2021) census is shown in table 3 below.

Table 3: Impact by factor of the NFF for 2023-24 compared with 2022-23

	22-23 NFF	22-23 SSG	22-23 Baseline	23-24 NFF	Change	
	£ m	£ m	£ m	£ m	£ m	%
Basic Entitlement	183.023	5.528	188.551	193.084	4.533	2.4%
Deprivation (see below)	16.965	0.989	17.954	18.643	0.690	3.8%
EAL	1.954		1.954	2.004	0.050	2.6%
Mobility	0.384		0.384	0.389	0.005	1.2%
Low prior attainment	14.278		14.278	14.602	0.324	2.3%
Lump Sum	11.038	0.335	11.373	11.648	0.275	2.4%
Sparsity factor	0.058		0.058	0.059	0.001	2.4%
Split Sites	0.230		0.230	0.230	0.000	0.0%
Rates	1.367		1.367	1.367	0.000	0.0%
Exceptional circumstances	0.108		0.108	0.111	0.004	3.5%
Additional funding for MPPFL	6.614		6.614	4.717	-1.897	-28.7%
MFG	0.831		0.831	0.525	-0.306	-36.8%
	236.851	6.852	243.702	247.380	3.678	1.5%
Breakdown of Deprivation						
FSM	4.019	0.000	4.019	4.105	0.086	2.1%
FMS6	6.882	0.989	7.871	8.208	0.337	4.3%
IDACI	6.063	0.000	6.063	6.330	0.267	4.4%
	16.965	0.989	17.954	18.643	0.690	3.8%

The reduction in the top up funding from the MPPFL and MFG reflects that these have increased by 0.5% but formula factors have increased by a greater percentage which reduces the difference with the formula allocations. This has also led to fewer schools needing to have funding topped up by moving above the MPPFL to the formula or no longer requiring MFG protection for relatively high historic allocations. This continues the trend from last year.

It is possible for 2023-24 to continue to replicate the national funding methodology in the local formula for individual schools and to use an MFG of 0.5%. This formula should be affordable with a small surplus available to contribute to high needs. Only significant data changes or an inadequate growth fund allocation would prevent the NFF from being affordable.

4.2. Summary Impact of the NFF for Individual Schools

A summary of the impact for schools is provided in Table 4 below:

Table 4: Summary Final Formula Positions (based on 2022-23 data)

Number of schools	2022-23	2023-24
MFG	16	7
MPPFL	43	38
Fully formula funded	32	46
Total Schools	91	91

Appendix 1 provides the indicative impact for individual schools. The estimated budgets use the data applicable to the 2022-23 local formula. This removes the impact of changing pupil numbers and pupil data and enables a direct comparison to be made with 2022-23 funding levels.

5. The High Needs Block (HNB)

5.1. Overview

The HNB primarily supports individual pupils, either through additional funding within mainstream, special school funding or funding to specialist providers. It also includes the funding for those unable to attend school due to exclusion or medical needs.

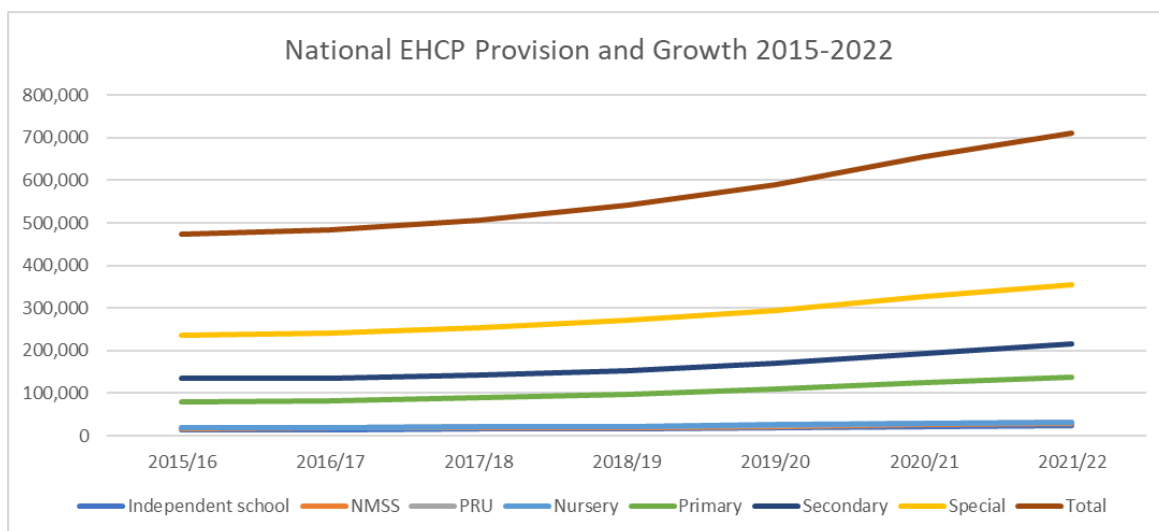
HNB pressures are now recognised as a national issue linked to several drivers, including government policy changes. The introduction of a new Code of Practice for Special Educational Needs and Disabilities (SEND) in 2014 increased the age range from 0 to 25 (previously age 0 to 19) and increased parental expectations of support available. The resulting increase in education, health, and care plans (EHCPs) has far outstripped the increases in high needs funding.

The relevant data is in table 5 below and in the graph (figure 2) that follows.

Table 5: National number of EHCPs by provider type-

Provider type	2016/17	2017/18	2018/19	2019/20	2020/21	2021/22	2021/22 National	2021/22 BCP
Independent school	14,065	15,969	16,576	19,011	21,887	25,022	7%	5%
Non-maintained special	3,671	3,550	3,584	3,686	3,850	3,890	1%	10%
Pupil referral unit	1,633	1,866	2,161	2,520	3,064	3,295	1%	1%
State-funded nursery	368	350	389	376	540	535	0%	0%
State-funded primary	62,390	66,789	74,404	83,438	95,601	105,756	30%	24%
State-funded secondary	53,867	53,026	55,233	60,229	68,370	76,838	22%	21%
State-funded special	106,190	112,129	118,818	125,498	134,306	140,230	39%	39%
Total	242,184	253,679	271,165	294,758	327,618	355,566	100%	100%
Annual Growth	2.3%	4.7%	6.9%	8.7%	11.1%	8.5%	8.5%	14.1%
BCP Annual Growth					12.2%	14.1%		

Figure 2: This national EHCP growth data is shown graphically below:



National data shows modest growth in EHCPs initially in 2016-17 at 2.3% but this rate has increased steadily each year and by 2020-21 the rate of annual growth had increased to 11.1%. This dropped back to 8.5% in 2021-22.

As state funded special schools have been unable to expand rapidly to contain this growth, the use of generally more expensive independent and non-maintained special schools (INMSS) has increased by 63% over this same period.

Contrary to the national picture, BCP continues to have escalating EHCP growth, with 1.6 times that of national data in 2021-22 at 14.1% and with use of INMSS relatively high at 15% compared with 8% nationally. BCP has a corresponding relatively low proportion of EHCPs in state primary schools as also shown above in table 5.

5.2. High Needs Budget Summary Position 2023-24

There has been an annual shortfall in high needs funding since before local government reorganisation in April 2019, but other funding sources were able to be added as necessary to minimise the shortfall. Since that time levers to manage the annual deficit have reduced with the ESFA no longer allowing transfers greater than 0.5% of schools block funding or councils to top up the DSG from their own resources. In 2022-23 the Schools Forum supported a transfer from the schools block of £0.75 million but allocated £0.4 million of this to early years providers to enable their base rate (similar factor to the schools formula basic entitlement) to be increased above that affordable from funding provided through the early years block. This amount is not therefore, available to put towards the high needs funding shortfall in the current year.

The legacy councils high needs budgets were relatively high compared nationally, largely due to the greater use of INMSS. As a result, the main element of BCP's high needs funding is protected in the national high needs NFF through a funding floor mechanism in a similar way to the MFG for mainstream school funding. The main funding increase has been provided through an uplift to this funding floor for each year. Until 2020-21 the annual uplifts had been small and nationally high needs funding gaps and accumulated DSG deficits had started to emerge and grow rapidly.

The national minimum increase of 8% per high needs pupil BCP over the three years 2020-21 to 2022-23 has not closed the funding gap with the growth in EHCPs still greater over this period. Estimated funding growth for 2023-24 is 4.8%. Note also that the funding increase

needs to cater for increased costs from growing complexity of need, general inflationary pressures and greater use of higher cost settings as new local provision cannot be quickly created in response to growing needs.

Even though a significant number of local places have been created since 1 April 2019, reliance on (usually) higher cost non-state provision through independent and non-maintained special schools (INMSS) has grown further. The annual funding gap in 2021-22 was £12 million at outturn, the forecast for 2022-23 is £16 million growing to an estimated £25 million for 2023-24.

The high needs summary in Appendix 2 details the scale of the funding gap for 2023-24 with work underway (see section 5.5 below) to update the underlying assumptions and establish future developments. There is further budget growth expected particularly for INMSS, mirroring the national trend, as new demand will likely continue to outpace the creation of new state-funded places.

Creation of further local places and more high needs pupils remaining in mainstream schools could reduce this gap but not at any scale to eliminate it. It should also be noted that plans for individuals can be determined through a legislative process, and this can direct a more costly placement through the SEND Tribunal system regardless of the availability of local places.

5.3. New High Needs Places Planned from September 2023

As part of the Council's strategy to address growth and associated financial pressure, work is underway to implement a programme of expansion of specialist school places across BCP which will help provide local access to cost effective places and contribute to a reduction in the Council's reliance on independent placements.

Working with our local school partners, the Council is currently assessing schemes for the development of specialist school places on local school sites. A total of 21 schemes are being assessed as part of a phased approach (4 tranches) to the delivery of places – see table below. The first of these tranches has delivered places in specialist and mainstream schools from September 2022. The second and third tranches of schemes are currently in development and provide places from September 2023. The evaluation of schemes in Tranche 4 are at an early stage and require further assessment to identify a robust business case for the provision of places proposed. The Council is ensuring that all schemes have an updated SLA which will include activities to monitor the impact of the scheme on the HN Recovery Plan. Data and performance indicators are being agreed for this purpose and will be monitored quarterly.

Table 6: SEND Programme of Expansion - Summary of Potential Capital Schemes

Tranche	No. of Schemes	Total no. of Places	A/Y Planned (P) Estimated (E) Delivery	Status of schemes
1	4	50	2022/23 (P)	Completion in Sept 22, Oct 22 and March 23
2	3	40	2023/24-2024/25 (E)	Options appraisal, pre-planning and feasibility
3	2	60-80	2024/20-2025/26 (E)	Concept, options appraisal
4	12	220*	2023 – 2026 (E)	Evaluation/Business Plan/Outline concept only
	21	370-390		

*Note: Subject to evaluation, affordability, development.

In addition to the programme of expansion, the following work is underway:

- **Graduated Pathways:** The Council is developing a programme of work to provide graduated pathways for children with SEND. This will provide a limited capital fund for mainstream schools to promote inclusive practice. The scope and brief of this work is in development.
- **New Special School Applications:** The Council has submitted two applications to the DfE to establish two new Free Special Schools each providing up to 180 places (subject to site considerations). The outcome of the initial application stage is expected to be announced late 2022 to early 2023. For successful applications, proposer groups will submit their applications in February 2023 as part of a competitive process and through the publication of local authority specifications and proposer guidance.

5.4. Mainstream Top Up Funding Review

Pupils with SEND in mainstream schools are supported by a combination of the school delegated budget (schools block funding) and top up funding (SEN packages) and outreach services funded from the HNB.

A review of the SEN packages has taken place and revised bandings are being implemented from November 2022. This includes the revision of the descriptors, and banding values to ensure available funding is utilised effectively and efficiently to better support mainstream schools to remain inclusive.

5.5. Delivering Better Value in SEND (DBV)

The DfE has acknowledged the pressures which local systems are experiencing delivering special educational needs and disability (SEND) services. The initial “Safety Valve” programme was designed for those authorities with already unsustainable deficits. The second programme of work is through the ‘Delivering Better Value in SEND programme’ and is aiming to support local authorities to improve delivery of SEND services for children and young people while ensuring services are sustainable. BCP is one of 55 local authorities taking part in this next phase – chosen from those with the next highest or significantly growing deficits.

Newton Europe, in collaboration with the Chartered Institute of Public Finance and Accountancy (CIPFA), is working with the Department to deliver phase one of the programme. BCP Council will have completed their diagnostics by December 2022. The objective of the diagnostic is, through robust evidence gathering and system engagement, to identify the most impactful changes that can be made to improve outcomes for children and young people with SEND. The key improvements required to achieve the better outcomes will be identified and a plan created to set the authority, and local partners, on the journey to deliver the opportunities. A key part of this work will be a clear trajectory showing how a more sustainable financial position can be achieved while meeting the needs of children and young people (CYP) with SEND.

Activities involved in the delivery of the diagnostic will include, but not be limited to:

- Understanding the local context of services and improvement activity to date. This will enable the process to build upon the work already done.
- Engagement with system partners and stakeholders by working within and building upon existing communication forums and channels – including with parents, education, and health partners.
- Training of local authority staff in Newton and CIPFA’s methodology to enable partnership working and skills transfer to the authority. This will support the effectiveness of the diagnostic and subsequent implementation of the findings. This training is split into modules and will

include how to identify root cause opportunities to improve service delivery; forecasting the operational and financial impacts of delivering improvements; and leading change across the system and building the appropriate plan.

- Data analysis within and across a standard and comprehensive data set from all 55 authorities to understand common themes and trends which will inform best practice.
- Detailed case review workshops to understand any opportunities to improve the timeliness and nature of outcomes achieved for the CYP receiving services.
- Mapping of services across the local area and where possible evidencing the effectiveness of these to support CYP with SEND.
- Developing a suite of tools and best practice to be shared during and after the diagnostic offer.
- Assisting authorities to receive a grant from DfE to support their implementation of the identified opportunities.

At the end of the Diagnostic, authorities will receive funding from the DfE and with support from DfE officials and their local SEND advisors will deliver the plan to realise these opportunities to improve.

6. Transfer of School Block Funding to High Needs and Local Formula Options

6.1. DSG Regulations

It is possible to transfer funding from mainstream schools to support expenditure in other funding blocks. This requires the agreement of the Schools Forum. A transfer can be made of up to 0.5% of mainstream school funding. A transfer above this level requires the approval of the Secretary of State. Any decision is for 2023-24 only and will be needed at the January 2023 meeting so that work can progress to finalise the mainstream school formula.

6.2. Level of Transfer

The mainstream schools NFF has been fully affordable in previous years for all schools after an appropriate growth fund has been calculated. Surplus funding has reduced in recent years due to rising levels of deprivation in school data and less unused growth funding being available. In 2022-23 the surplus was only 0.3% with all schools receiving their full NFF allocations.

The full 0.5% may not be possible again for 2023-24. Most Schools Forum members have not supported any level of transfer that would prevent all schools receiving their full NFF funding. However, with the significant and growing high needs deficit it must be considered as an option.

6.3. Local formula 2023-24

Local authorities are continuing to determine final allocations for all local mainstream schools in 2023-24 but are required to move towards the NFF.

In implementing the tightening criteria to move towards the NFF, local factor values in 2022-23 within 2.5% of the respective NFF values are deemed to be mirroring the NFF. The BCP formula currently uses the NFF values so is deemed to be mirroring for all factors. In 2023-24 factor values can be set anywhere within +/- 2.5% of the 2023-24 NFF values. Each local authority has been given individual data according to this rule for each funding factor based on their 2022-23 formula. This provides the range of permitted unit values in the formula for each factor so the DfE can ensure movement towards the NFF.

Local authorities are not permitted to seek to disapply the tightening requirements. Instead, local authorities have other options for managing any affordability constraints. All local

authorities can make use of the 2.5% threshold for mirroring the NFF by setting their factor values 2.5% below the NFF. Other options include, applying a cap or scaling back overall gains for individual schools. If affordability constraints remain after these options have been exhausted, local authorities can also submit disapplication requests to the DfE to adjust the MPPFL and the MFG.

6.4. Local formula Options 2023-24

Options have been developed to release funding from the NFF taking account of the tightening criteria, other restrictions imposed on how the formula operates and the DfE signalled direction of travel in managing the shortfall in high needs funding.

The levers to release funding from the NFF and the maximum funding that could be achieved for each lever in isolation and is summarised in the table below:

Table 7 – Funding Levers to Release Funding from the NFF

Funding Levers	Schools Impacted	Schools not impacted	Maximum Released £
(a) Funding as per NFF (Surplus school block)	<ul style="list-style-type: none"> None 	<ul style="list-style-type: none"> All 	£159,492
(b) Reduce all factor unit values below the NFF towards the maximum permitted (2.5% below)	<ul style="list-style-type: none"> Schools on the formula 	<ul style="list-style-type: none"> Schools receiving MFG protection Schools receiving MPPFL allocations 	£2,614,128
(c) Reduce the MFG below 0.5% (minimum is 0%)	<ul style="list-style-type: none"> Schools receiving MFG allocations 	<ul style="list-style-type: none"> Schools receiving formula allocations Schools receiving MPPFL allocations 	£237,009
(d) Reduce MPPFL levels below NFF– (requires DfE approval).	<ul style="list-style-type: none"> Schools receiving MPPFL - limited to MFG increase 	<ul style="list-style-type: none"> Schools receiving formula allocations Schools receiving MFG increase and not on MPPFL 	£228,824
(e) Establish a cap on gains of 0.5%	<ul style="list-style-type: none"> Schools on the formula where the NFF and data movements provide the largest gains 	<ul style="list-style-type: none"> Schools receiving lower formula increases Schools receiving MFG allocations Schools receiving MPPFL allocations 	£2,615,160
(f) If all levers maximised	<ul style="list-style-type: none"> All 	<ul style="list-style-type: none"> none 	£3,830,446

The impact has been modelled for each lever in isolation in Appendix 3. Any option taken forward could use levers in combination.

QUESTION 1

Do you agree that Schools Forum should agree the transfer of surplus school block funding (lever a) to support the high needs budget?

- ☐ **Yes**
- ☐ **No**
- ☐ **Unsure**

If no, why?

QUESTION 2

Do you agree that schools should contribute to the management of the high needs funding shortfall by contributing funding from their NFF allocations? (funding levers b-e)

- ☐ **Yes**
- ☐ **No**
- ☐ **Unsure**

If no, please explain your reasons.

QUESTION 3

Do you agree that if a funding transfer is made beyond the level of surplus schools block funding that all mainstream schools should contribute funding from their NFF allocations? (all funding levers b-d)

- ☐ **Yes**
- ☐ **No**
- ☐ **Unsure**

If no, which schools should be exempt from contributing (tick all that should apply).

- ☐ **(lever b) Those receiving formula allocations (local formula unit values =NFF)**
- ☐ **(lever c) Those receiving MFG allocations (MFG should be set at 0.5%)**
- ☐ **(lever d) Those receiving minimum per pupil funding levels (MPPFL = NFF).**

Please explain your reasons.

QUESTION 4

Do you agree that if a funding transfer is made beyond the level of surplus schools block funding that schools with funding increases beyond 0.5% (the level of the MFG and increase in the MPPFL in the NFF) should see gains capped to be more in line with increases for other schools? (funding lever e)

- ☐ **Yes**
- ☐ **No**
- ☐ **Unsure**

Please explain your reasons.

7. Formula affordability

7.1. Summary of Options

Final school budgets will be calculated following receipt of the October 2022 census data from the DfE in December. Affordability of the NFF will need to be assessed again at that time.

Should the data change significantly between the October 2021 and October 2022 censuses, the primary and secondary units of funding (based on October 2021 data) could provide insufficient funding to distribute locally through the NFF, even without a transfer to high needs.

As noted in section 6 above, the DfE expect the following adjustments to the local formula to be made before seeking approval to disapply any of the regulations.

- a) Setting factor values 2.5% below the NFF.
- b) Applying a cap or scaling back overall gains for individual schools.
- c) Setting the MFG below 0.5%

If affordability constraints remain after these options have been exhausted, then the final option is:

- d) Local authorities can submit disapplication requests to the DfE to adjust the MPPFL and the MFG.

7.2. Proposal for NFF Funding Shortfall

It is proposed that where there is no choice but to reduce NFF funding to schools due to insufficient funding then adjustments will be made in the following order until the formula is affordable:

- a) Reducing the unit values of the basic entitlement factors for each phase by the same proportion up to the maximum 2.5% below the NFF.
- b) Reducing all other unit values equally up to the maximum 2.5% below the NFF
- c) Setting the MFG below 0.5%
- d) Seeking a disapplication to reduce the 2023-24 MPPFLs.

There are no proposals to allocate surplus NFF funding to increase unit values in the local formula. Surplus funding will be transferred to high needs as permitted or used to reduce the historic deficit.

QUESTION 5

Do you agree that if the NFF is unaffordable (without any transfer to high needs) that adjustments are made in accordance with paragraph 7.2?

- ☐ **Yes**
- ☐ **No**
- ☐ **Unsure**

If no, please can you suggest an alternative?

8. Growth Fund

8.1. Proposed policy for 2023-24

The local authority is required to produce criteria through which growth funding is allocated, and this must be agreed by the Schools Forum. Growth funding can be allocated for the following purposes:

- support growth in pre-16 pupil numbers to meet basic need
- support additional classes needed to meet the infant class size regulation

Funding to cover mainstream pupil growth is allocated to the council using a formulaic method based on lagged growth data. The amount allocated in 2022-23 was £1.8 million. The allocation for 2023-24 has not yet been announced.

Growth funding is provided to schools depending on the circumstances according to either the national statutory arrangements (implicit growth through the funding formula) or under the local growth fund policy (explicit growth through a central budget).

It is statutory to provide growth through all the formula funding factors for new and growing schools, where the school is either new or has changed its age range and does not yet have all year groups open. As an example, a new free school (Livingstone) opened with 150 places in year 7 in September 2021 and this school continues to be funded through statutory implicit growth using estimated data for the new September intake. This implicit growth will be provided through the formula each year until the school has pupils in all years groups.

It is proposed to use the existing policy for the central growth fund for 2023-24 (explicit growth where we have discretion). This policy funds each new place added at the relevant key stage basic entitlement for the period September to March for maintained schools and for the full academic year for academies. It includes both permanent and temporary growth. Where the growth does not materialise according to the following October census, that place is only funded at 30% of the above.

The central budget needs to include only the period from September to March regardless of schools status. The summer term falls into the next financial year when the NFF and school budget calculations will reflect the increase in pupils.

There is an expectation that a growth fund is established to support pupil growth requested by the council to meet basic need. Further, there is a requirement that the growth fund allocates start up and diseconomy of scale funding to new local free schools commissioned by the council. There are no such schools currently in BCP and a fresh policy will be developed if this becomes applicable.

8.2. Indicative financial cost of funding growth

The final growth fund payments for 2022-23 will be determined after the census data has been received in December 2022.

Table 7: Summary of explicit growth fund under proposed policy

	2022-23 Forecast	2023-24 Forecast	2024-25 Forecast
Total	513,000	467,000	397,000

Further details of the proposed policy are set out in Appendix 4, with a detailed breakdown of forecast spend.

QUESTION 6

Do you support that the existing growth fund policy continues for 2023-24?

- ☐ **Yes**
- ☐ **No**
- ☐ **Unsure**

If no, what changes should we make?

9. Central Schools Services Block

9.1. Funding and Draft Budget 2023-24

It is proposed to allocate the central services block funding to the council for the related services. A national formula was introduced for 2018-19 to determine allocations for ongoing central service for all schools. It is largely based on pupil numbers but with an allowance to reflect relative levels of deprivation. The BCP funding rate had been reducing by the maximum 2.5% per annum as the underlying formula provided less than historic amounts. This formula has now been reached with 2023-24 funding reducing by only 1.3%. Final allocations will be updated in December with pupil numbers from the October 2022 school census.

Other funding in this block is for historic commitments at cost which is scheduled to decrease by 20% each year unless an application to the DfE is successful in retaining enough funding to cover prudential borrowing repayments and early retirement commitments. This application was successful last year and as nothing has changed it is expected that it will be again for 2023-24. Services for maintained schools only are not included in the central schools services block. Although statutory duties of the council the allocation to budgets is decided by Schools Forum. The draft budget for these services is as follows.

Table 9: Central School Services 2023-24

Central School Services	2022-23 £000's	Change £000's	2023-24 £000's
School admissions and access arrangements	423	-36	387
Licences purchased by DfE	247	0	247
Servicing Schools Forum	10	0	10
Ex ESG services all schools	1,064	13	1,077
Commitments - premature retirements (ex DCC)	17	0	17
Commitments - ASD Base / other	275	0	275
Total Expenditure	2,036	-23	2,013

* Included in the total for 2023-24 is full commitment funding assuming application to ESFA will be successful again.

9.2. School Admissions and Servicing of the Schools Forum

Any further reduction would require schools to consider how individually they manage the Schools Admissions Forum or school admissions process in the absence of coordinated arrangements.

The Schools Forum budget supports the cost of the meeting itself and attendance of early years voluntary and private sector members at sub-group meetings. The budget requirement has been reduced assuming that some meetings will continue to be virtual next year.

9.3. DfE Licenses

The list of licences negotiated on behalf of all schools by the DfE is to be included in the budget 2023-24 consultation. However, the LA has no influence over which licenses are included or the level of the DfE change on the DSG.

The list of licenses included in the charge is the same as last year as follows:

Christian Copyright Licensing International (CCLI)
Copyright Licensing Agency (CLA)

Education Recording Agency (ERA)
 Filmbank Distributors Ltd (For the PVSL)
 Mechanical Copyright Protection Society (MCPS)
 Motion Picture Licensing Company (MPLC)
 Newspaper Licensing Agency (NLA)
 Performing Rights Society (PRS)
 Phonographic Performance Limited (PPL)
 Schools Printed Music Licence (SPML)

9.4. Ex ESG Services

These services are LA statutory duties on behalf of all schools, including academies and special schools. The list of these services is included in Appendix 5 alongside the different duties for maintained schools only for clarity.

Table 9: Ex ESG Services 2023-24

Ex ESG Services	2022-23 £000's	Change £000's	2023-24 £000's
Statutory and Regulatory Duties	502	14	516
Education Welfare	414	-1	413
Asset Management	148	0	148
Total Ex ESG services all schools	1,064	13	1,077

If this level of funding is not allocated to support the LA costs, then the consequences could be that:

- Activity supporting the various cross school networks would need to be reduced.
- Support for pupils with poor school attendance could be reduced.
- Support to schools with basic need capital projects would reduce.
- Central activity is reduced in SEND capital projects forming part of the BCP high needs action plan.
- Potential capital bidding rounds could be left unsupported with lost opportunity of drawing government funds into BCP.

9.5. Historic Commitments

The historic commitment is of funding to repay prudential borrowing taken out by the legacy Bournemouth Council to fund the Springwood scheme. Springwood is an expansion of Linwood Special School on a separate campus that provides autism spectrum disorder provision for 54 pre-16 places and 6 post-16 places. Historic early retirement costs were passed to BCP from Dorset Council when the new authority was formed in April 2019.

QUESTION 7

Please provide any comments you would like to make concerning the budgets in the central school services block.

10. Conclusion and Next Steps

QUESTION 8

Are there any further comments you would like to make about any issues within the scope of this consultation?

Next Steps

A summary of consultation questions is included at Appendix 5. The consultation closes on Friday 2 December 2022 at midnight, but earlier responses are welcomed.

Please respond using the online survey link on this document title page

Responses will be collated and considered at the Schools Forum meeting on 16 January 2023

At the same meeting Schools Forum will receive a report detailing the outcome of the mainstream formula for 2023-24, the final schools budget calculations to be sent to the ESFA to take account of the October 2022 census and will make recommendations to Council.

Schools Forum recommendations will be considered by BCP Council on 21 February 2023.

The Schools Forum in January 2023 will decide on the level of any funding transfer to high needs, the level of the growth fund and budgets supporting central services for schools.

Appendix 1

a) Funding as per NFF	22-23 Budget		22-23 Budget adjusted for SSG		23-24 Budget		Change	
	22-23 Budget	Supp. Grant						
Primary								
Ad Astra Infant School	1,154,874	34,618	£1,189,492	formula	£1,218,974	formula	£29,482	2.5%
Avonwood Primary School	2,418,255	64,459	£2,482,714	MPPFL	£2,497,635	MPPFL	£14,921	0.6%
Baden-Powell and St Peter's Church of England Junior School	3,074,133	77,054	£3,151,187	MPPFL	£3,174,513	MPPFL	£23,326	0.7%
Bayside Academy	1,365,651	41,757	£1,407,408	MFG	£1,434,859	formula	£27,451	2.0%
Bearwood Primary and Nursery School	927,095	27,754	£954,849	formula	£978,872	formula	£24,023	2.5%
Bethany Church of England Junior School	1,713,252	51,934	£1,765,186	formula	£1,810,990	formula	£45,804	2.6%
Bishop Aldhelm's Church of England Primary School	2,566,921	71,218	£2,638,139	MPPFL	£2,650,781	MPPFL	£12,642	0.5%
Broadstone First School	1,292,920	35,609	£1,328,529	MPPFL	£1,335,200	MPPFL	£6,671	0.5%
Burton Church of England Primary School	1,490,524	42,136	£1,532,660	MPPFL	£1,547,093	formula	£14,432	0.9%
Canford Heath Infant School	1,519,963	42,705	£1,562,668	MPPFL	£1,569,812	MPPFL	£7,144	0.5%
Canford Heath Junior School	2,046,811	57,271	£2,104,082	MPPFL	£2,113,922	MPPFL	£9,840	0.5%
Christ The King Catholic Primary School	1,634,365	42,768	£1,677,133	MFG	£1,684,851	MFG	£7,718	0.5%
Christchurch Infant School	1,538,333	41,880	£1,580,213	MPPFL	£1,587,333	MPPFL	£7,120	0.5%
Christchurch Junior School	2,102,314	57,682	£2,159,996	MFG	£2,171,054	MPPFL	£11,058	0.5%
Corpus Christi Catholic Primary School	1,863,189	51,012	£1,914,201	formula	£1,962,295	formula	£48,093	2.5%
Courthill Infant School	1,535,359	41,818	£1,577,177	MPPFL	£1,585,619	MPPFL	£8,442	0.5%
Elm Academy	2,158,827	59,029	£2,217,856	MFG	£2,228,280	MFG	£10,424	0.5%
Hamworthy Park Junior School	2,002,882	59,106	£2,061,988	MPPFL	£2,102,255	formula	£40,268	2.0%
Haymoor Junior School	1,527,556	46,202	£1,573,758	MPPFL	£1,580,941	MFG	£7,183	0.5%
Heatherlands Primary School	2,619,654	75,454	£2,695,108	MPPFL	£2,707,896	MPPFL	£12,788	0.5%
Heathlands Primary Academy	981,682	27,894	£1,009,576	MFG	£1,013,954	MFG	£4,379	0.4%
Highcliffe St Mark Primary School	2,784,355	71,320	£2,855,675	MPPFL	£2,875,355	MPPFL	£19,680	0.7%
Hill View Primary School	2,657,781	70,547	£2,728,328	MPPFL	£2,744,721	MPPFL	£16,393	0.6%
Hillbourne Primary School	1,044,920	32,318	£1,077,238	formula	£1,103,959	formula	£26,720	2.5%
Jewell Academy Bournemouth	1,875,005	49,368	£1,924,373	MFG	£1,933,317	MFG	£8,943	0.5%
King's Park Academy	2,888,921	83,210	£2,972,131	MFG	£2,986,310	MFG	£14,179	0.5%
Kingsleigh Primary School	3,455,795	102,543	£3,558,338	formula	£3,649,429	formula	£91,091	2.6%
Kinson Academy	997,043	30,802	£1,027,845	formula	£1,054,250	formula	£26,405	2.6%
Lilliput Church of England Infant School	1,512,211	38,516	£1,550,727	MPPFL	£1,561,631	MPPFL	£10,904	0.7%
Livingstone Road Infant School	1,092,877	30,920	£1,123,797	MFG	£1,128,755	MFG	£4,958	0.4%
Livingstone Road Junior School	1,200,467	36,115	£1,236,582	formula	£1,267,857	formula	£31,274	2.5%
Longfleet Church of England Primary School	2,703,093	72,792	£2,775,885	MPPFL	£2,791,433	MPPFL	£15,548	0.6%
Malmesbury Park Primary School	2,710,599	75,281	£2,785,880	MPPFL	£2,815,884	formula	£30,004	1.1%
Manorside Academy	1,807,537	53,470	£1,861,007	MFG	£1,872,315	formula	£11,308	0.6%
Merley First School	1,289,807	34,917	£1,324,724	MPPFL	£1,331,947	MPPFL	£7,223	0.5%
Moordown St John's Church of England Primary School	1,798,468	50,115	£1,848,583	MPPFL	£1,857,268	MPPFL	£8,685	0.5%
Mudeford Community Infants' School	819,572	23,192	£842,764	MFG	£855,651	formula	£12,887	1.5%

a) Funding as per NFF			22-23 Budget		23-24 Budget		Change	
	22-23 Budget	Supp. Grant	adusted for SSG					
Primary								
Mudeford Junior School	1,170,695	33,611	£1,204,306	formula	£1,233,951	formula	£29,645	2.5%
Muscliff Primary School	2,626,210	72,479	£2,698,689	MPPFL	£2,711,890	MPPFL	£13,201	0.5%
Oakdale Junior School	1,949,545	56,449	£2,005,994	MFG	£2,015,309	MPPFL	£9,315	0.5%
Ocean Academy Poole	1,315,934	39,726	£1,355,660	formula	£1,389,676	formula	£34,016	2.5%
Old Town Infant School and Nursery	810,394	24,300	£834,694	formula	£856,254	formula	£21,560	2.6%
Pokesdown Community Primary School	1,770,405	52,071	£1,822,476	MPPFL	£1,830,904	MPPFL	£8,428	0.5%
Queen's Park Academy	2,054,301	56,773	£2,111,074	MPPFL	£2,121,361	MPPFL	£10,287	0.5%
Queen's Park Infant Academy	1,530,029	42,134	£1,572,163	MPPFL	£1,580,009	MPPFL	£7,846	0.5%
Somerford Primary School	1,206,173	35,946	£1,242,119	formula	£1,273,726	formula	£31,607	2.5%
Springdale First School	1,280,073	33,788	£1,313,861	MPPFL	£1,321,933	MPPFL	£8,072	0.6%
St Clement's and St John's Church of England Infant School	1,331,455	38,334	£1,369,789	MFG	£1,395,750	formula	£25,961	1.9%
St James' Church of England Primary Academy	1,771,649	50,213	£1,821,862	MPPFL	£1,830,302	MPPFL	£8,440	0.5%
St Joseph's Catholic Primary School, Christchurch	999,790	28,894	£1,028,684	formula	£1,054,967	formula	£26,283	2.6%
St Joseph's Catholic Primary School, Poole	1,645,064	46,357	£1,691,421	formula	£1,734,130	formula	£42,710	2.5%
St Katharine's Church of England Primary School	1,877,368	47,514	£1,924,882	MFG	£1,933,823	MPPFL	£8,941	0.5%
St Luke's Church of England Primary School	1,933,267	54,472	£1,987,739	MPPFL	£2,012,190	formula	£24,451	1.2%
St Mark's Church of England Primary School	1,790,706	48,051	£1,838,757	MPPFL	£1,849,226	MPPFL	£10,469	0.6%
St Mary's Catholic Primary School, Poole	1,761,619	47,117	£1,808,736	MPPFL	£1,819,159	MPPFL	£10,423	0.6%
St Michael's Church of England Primary School	2,838,501	77,900	£2,916,401	formula	£2,989,539	formula	£73,138	2.5%
St. Walburga's Catholic Primary School	1,784,444	45,319	£1,829,763	MPPFL	£1,842,824	MPPFL	£13,061	0.7%
Stanley Green Infant Academy	1,027,619	29,680	£1,057,299	MPPFL	£1,081,320	formula	£24,021	2.3%
Stourfield Infant School	1,447,602	40,121	£1,487,723	MFG	£1,494,495	MPPFL	£6,772	0.5%
Stourfield Junior School	2,035,296	56,640	£2,091,936	MPPFL	£2,101,796	MPPFL	£9,860	0.5%
Talbot Primary School	2,578,340	74,899	£2,653,239	formula	£2,720,925	formula	£67,686	2.6%
The Epiphany School	1,781,063	45,987	£1,827,050	MPPFL	£1,839,303	MPPFL	£12,253	0.7%
The Priory Church of England Primary School	886,142	25,204	£911,346	MPPFL	£920,890	formula	£9,544	1.0%
Twin Sails Infant and Nursery School	1,503,195	42,305	£1,545,500	MPPFL	£1,570,265	formula	£24,765	1.6%
Twynham Primary School	926,384	26,842	£953,226	MPPFL	£957,326	MPPFL	£4,100	0.4%
Winton Primary School	3,597,363	101,055	£3,698,418	MPPFL	£3,716,196	MPPFL	£17,778	0.5%

a) Funding as per NFF		22-23 Budget		22-23 Budget adusted for SSG	23-24 Budget		Change	
	22-23 Budget	Supp. Grant						
<u>Middle-deemed Secondary</u>								
Broadstone Middle School	3,028,216	90,229	£3,118,445	MPPFL	£3,133,330	MPPFL	£14,885	0.5%
<u>Secondary</u>								
Avonbourne Boys' Academy	4,000,549	118,969	£4,119,518	formula	£4,223,278	formula	£103,760	2.5%
Avonbourne Girls Academy	5,349,889	161,232	£5,511,121	formula	£5,649,780	formula	£138,660	2.5%
Bournemouth School	4,728,869	132,621	£4,861,490	MPPFL	£4,890,179	MPPFL	£28,689	0.6%
Bournemouth School for Girls	4,926,638	138,714	£5,065,352	MPPFL	£5,094,978	MPPFL	£29,626	0.6%
Corfe Hills School	3,814,021	112,985	£3,927,006	formula	£4,021,976	formula	£94,970	2.4%
Glenmoor Academy	4,983,199	157,806	£5,141,005	formula	£5,269,335	formula	£128,330	2.5%
Highcliffe School	6,963,934	205,952	£7,169,886	MPPFL	£7,204,918	MPPFL	£35,032	0.5%
LeAF Studio	1,526,093	45,369	£1,571,462	formula	£1,610,331	formula	£38,869	2.5%
Magna Academy	5,141,786	154,181	£5,295,967	formula	£5,430,019	formula	£134,052	2.5%
Oak Academy	3,126,757	99,304	£3,226,061	formula	£3,309,786	formula	£83,725	2.6%
Parkstone Grammar School	5,107,790	144,852	£5,252,642	MPPFL	£5,282,210	MPPFL	£29,568	0.6%
Poole Grammar School	4,956,823	137,539	£5,094,362	MPPFL	£5,126,113	MPPFL	£31,751	0.6%
Poole High School	9,152,767	276,588	£9,429,355	formula	£9,664,054	formula	£234,699	2.5%
St Aldhelm's Academy	5,085,102	154,375	£5,239,477	MFG	£5,336,109	formula	£96,632	1.8%
St Edward's Roman Catholic/Church of England School, Poole	5,222,595	154,910	£5,377,505	formula	£5,510,777	formula	£133,273	2.5%
The Bishop of Winchester Academy	6,149,573	188,782	£6,338,355	formula	£6,497,388	formula	£159,033	2.5%
The Bourne Academy	5,160,691	161,115	£5,321,806	formula	£5,459,066	formula	£137,260	2.6%
The Cornerstone Academy	3,380,655	106,070	£3,486,725	MFG	£3,565,592	formula	£78,867	2.3%
The Grange School	2,434,852	77,536	£2,512,388	formula	£2,576,709	formula	£64,321	2.6%
Twynham School	7,377,289	223,919	£7,601,208	MPPFL	£7,727,639	formula	£126,431	1.7%
Winton Academy	5,240,659	162,188	£5,402,847	formula	£5,537,089	formula	£134,242	2.5%
<u>All-through</u>								
Livingstone Academy Bournemouth	1,563,634	49,673	£1,613,307	formula	£1,654,853	formula	£41,546	2.6%
Parkfield School	2,634,704	75,170	£2,709,874	formula	£2,776,053	formula	£66,179	2.4%
St Peter's Catholic Comprehensive School	8,389,831	242,516	£8,632,347	formula	£8,842,145	formula	£209,798	2.4%
	236,850,552	6,851,562	£243,702,114		£247,380,356		£3,678,242	1.5%

High Needs Budget Estimates 2022-23 and 2023-24

High Needs Block	2022-23 FORECAST £000's	2023-24 FORECAST £000's
Independent schools	11,049	15,724
Non-maintained special schools	8,593	10,579
Colleges	1,108	1,180
Independent / specialist Colleges	4,674	5,645
Special schools	14,838	14,856
Mainstream classes	6,273	6,387
Mainstream bases	717	594
AP / medical / therapies	3,293	5,732
Total Top - Up for EHCPs	50,545	60,696
Commissioned & central services	4,065	5,588
Place Funding - SEND	11,193	11,043
TOTAL SEN	65,804	77,327
TOTAL AP	4,086	4,057
TOTAL HNB EXPENDITURE	69,890	81,384
TOTAL HNB FUNDING	54,011	56,593
HIGH NEEDS BLOCK DEFICIT IN-YEAR	15,879	24,791
Deficit brought forward	20,317	36,037
School block transfer	(351)	TBC
Other DSG Variances	192	
PROJECTED DSG DEFICIT CARRIED FORWARD	36,037	60,828

Assumptions:

1. Current year forecast reflects all agreed placements and an allowance at average costs for those under assessment or awaiting placement.
2. The 2023-24 forecast is from the unmitigated five year forecast previously presented. Work is currently underway with consultants from the DfE Delivering Better Value programme to update this.
3. No transfer from the school block has yet been included for 2023-24.
4. All other DSG funding blocks are balanced.

Appendix 3

(b) Reduce all factor unit values below the NFF towards the maximum permitted (2.5% below)	22-23 Budget		22-23 Budget adusted for SSG		23-24 Budget		Change	
	22-23 Budget	Supp. Grant						
Primary								
Ad Astra Infant School	1,154,874	34,618	£1,189,492	formula	£1,194,785	MPPFL	£5,293	0.4%
Avonwood Primary School	2,418,255	64,459	£2,482,714	MPPFL	£2,497,635	MPPFL	£14,921	0.6%
Baden-Powell and St Peter's Church of England Junior School	3,074,133	77,054	£3,151,187	MPPFL	£3,174,513	MPPFL	£23,326	0.7%
Bayside Academy	1,365,651	41,757	£1,407,408	MFG	£1,413,802	MFG	£6,393	0.5%
Bearwood Primary and Nursery School	927,095	27,754	£954,849	formula	£958,969	MFG	£4,121	0.4%
Bethany Church of England Junior School	1,713,252	51,934	£1,765,186	formula	£1,773,352	MFG	£8,166	0.5%
Bishop Aldhelm's Church of England Primary School	2,566,921	71,218	£2,638,139	MPPFL	£2,650,781	MPPFL	£12,642	0.5%
Broadstone First School	1,292,920	35,609	£1,328,529	MPPFL	£1,335,200	MPPFL	£6,671	0.5%
Burton Church of England Primary School	1,490,524	42,136	£1,532,660	MPPFL	£1,539,561	MPPFL	£6,901	0.5%
Canford Heath Infant School	1,519,963	42,705	£1,562,668	MPPFL	£1,569,828	MPPFL	£7,160	0.5%
Canford Heath Junior School	2,046,811	57,271	£2,104,082	MPPFL	£2,113,938	MPPFL	£9,856	0.5%
Christ The King Catholic Primary School	1,634,365	42,768	£1,677,133	MFG	£1,684,867	MFG	£7,734	0.5%
Christchurch Infant School	1,538,333	41,880	£1,580,213	MPPFL	£1,587,333	MPPFL	£7,120	0.5%
Christchurch Junior School	2,102,314	57,682	£2,159,996	MFG	£2,171,054	MPPFL	£11,058	0.5%
Corpus Christi Catholic Primary School	1,863,189	51,012	£1,914,201	formula	£1,923,111	MFG	£8,910	0.5%
Courthill Infant School	1,535,359	41,818	£1,577,177	MPPFL	£1,585,619	MPPFL	£8,442	0.5%
Elm Academy	2,158,827	59,029	£2,217,856	MFG	£2,228,296	MFG	£10,440	0.5%
Hamworthy Park Junior School	2,002,882	59,106	£2,061,988	MPPFL	£2,071,639	MPPFL	£9,652	0.5%
Haymoor Junior School	1,527,556	46,202	£1,573,758	MPPFL	£1,580,957	MPPFL	£7,199	0.5%
Heatherlands Primary School	2,619,654	75,454	£2,695,108	MPPFL	£2,707,912	MPPFL	£12,804	0.5%
Heathlands Primary Academy	981,682	27,894	£1,009,576	MFG	£1,013,970	MFG	£4,395	0.4%
Highcliffe St Mark Primary School	2,784,355	71,320	£2,855,675	MPPFL	£2,875,355	MPPFL	£19,680	0.7%
Hill View Primary School	2,657,781	70,547	£2,728,328	MPPFL	£2,744,721	MPPFL	£16,393	0.6%
Hillbourne Primary School	1,044,920	32,318	£1,077,238	formula	£1,081,857	MFG	£4,619	0.4%
Jewell Academy Bournemouth	1,875,005	49,368	£1,924,373	MFG	£1,933,333	MFG	£8,959	0.5%
King's Park Academy	2,888,921	83,210	£2,972,131	MFG	£2,986,326	MFG	£14,195	0.5%
Kingsleigh Primary School	3,455,795	102,543	£3,558,338	formula	£3,575,412	MFG	£17,074	0.5%
Kinson Academy	997,043	30,802	£1,027,845	formula	£1,032,325	MFG	£4,481	0.4%
Lilliput Church of England Infant School	1,512,211	38,516	£1,550,727	MPPFL	£1,561,631	MPPFL	£10,904	0.7%
Livingstone Road Infant School	1,092,877	30,920	£1,123,797	MFG	£1,128,771	MFG	£4,974	0.4%
Livingstone Road Junior School	1,200,467	36,115	£1,236,582	formula	£1,242,101	MFG	£5,518	0.4%
Longfleet Church of England Primary School	2,703,093	72,792	£2,775,885	MPPFL	£2,791,433	MPPFL	£15,548	0.6%
Malmesbury Park Primary School	2,710,599	75,281	£2,785,880	MPPFL	£2,799,219	MPPFL	£13,339	0.5%
Manorside Academy	1,807,537	53,470	£1,861,007	MFG	£1,869,659	MFG	£8,651	0.5%
Merley First School	1,289,807	34,917	£1,324,724	MPPFL	£1,331,947	MPPFL	£7,223	0.5%
Moordown St John's Church of England Primary School	1,798,468	50,115	£1,848,583	MPPFL	£1,857,268	MPPFL	£8,685	0.5%
Mudeford Community Infants' School	819,572	23,192	£842,764	MFG	£846,268	MFG	£3,504	0.4%
Mudeford Junior School	1,170,695	33,611	£1,204,306	formula	£1,209,601	MFG	£5,295	0.4%

(b) Reduce all factor unit values below the NFF towards the maximum permitted (2.5% below)			22-23 Budget adjusted for SSG		23-24 Budget		Change	
	22-23 Budget	Supp. Grant						
Primary								
Muscliff Primary School	2,626,210	72,479	£2,698,689	MPPFL	£2,711,890	MPPFL	£13,201	0.5%
Oakdale Junior School	1,949,545	56,449	£2,005,994	MFG	£2,015,325	MPPFL	£9,331	0.5%
Ocean Academy Poole	1,315,934	39,726	£1,355,660	formula	£1,361,774	MFG	£6,113	0.5%
Old Town Infant School and Nursery	810,394	24,300	£834,694	formula	£838,217	MFG	£3,524	0.4%
Pokesdown Community Primary School	1,770,405	52,071	£1,822,476	MPPFL	£1,830,920	MPPFL	£8,444	0.5%
Queen's Park Academy	2,054,301	56,773	£2,111,074	MPPFL	£2,121,361	MPPFL	£10,287	0.5%
Queen's Park Infant Academy	1,530,029	42,134	£1,572,163	MPPFL	£1,580,009	MPPFL	£7,846	0.5%
Somerford Primary School	1,206,173	35,946	£1,242,119	formula	£1,247,514	MFG	£5,395	0.4%
Springdale First School	1,280,073	33,788	£1,313,861	MPPFL	£1,321,933	MPPFL	£8,072	0.6%
St Clement's and St John's Church of England Infant School	1,331,455	38,334	£1,369,789	MFG	£1,375,994	MFG	£6,205	0.5%
St James' Church of England Primary Academy	1,771,649	50,213	£1,821,862	MPPFL	£1,830,318	MPPFL	£8,456	0.5%
St Joseph's Catholic Primary School, Christchurch	999,790	28,894	£1,028,684	formula	£1,033,184	MFG	£4,500	0.4%
St Joseph's Catholic Primary School, Poole	1,645,064	46,357	£1,691,421	formula	£1,699,219	MFG	£7,799	0.5%
St Katharine's Church of England Primary School	1,877,368	47,514	£1,924,882	MFG	£1,933,839	MPPFL	£8,957	0.5%
St Luke's Church of England Primary School	1,933,267	54,472	£1,987,739	MPPFL	£1,997,013	MPPFL	£9,274	0.5%
St Mark's Church of England Primary School	1,790,706	48,051	£1,838,757	MPPFL	£1,849,226	MPPFL	£10,469	0.6%
St Mary's Catholic Primary School, Poole	1,761,619	47,117	£1,808,736	MPPFL	£1,819,159	MPPFL	£10,423	0.6%
St Michael's Church of England Primary School	2,838,501	77,900	£2,916,401	formula	£2,930,309	MPPFL	£13,908	0.5%
St. Walburga's Catholic Primary School	1,784,444	45,319	£1,829,763	MPPFL	£1,842,824	MPPFL	£13,061	0.7%
Stanley Green Infant Academy	1,027,619	29,680	£1,057,299	MPPFL	£1,061,942	MPPFL	£4,642	0.4%
Stourfield Infant School	1,447,602	40,121	£1,487,723	MFG	£1,494,511	MPPFL	£6,788	0.5%
Stourfield Junior School	2,035,296	56,640	£2,091,936	MPPFL	£2,101,796	MPPFL	£9,860	0.5%
Talbot Primary School	2,578,340	74,899	£2,653,239	formula	£2,665,838	MFG	£12,599	0.5%
The Epiphany School	1,781,063	45,987	£1,827,050	MPPFL	£1,839,303	MPPFL	£12,253	0.7%
The Priory Church of England Primary School	886,142	25,204	£911,346	MPPFL	£915,262	MPPFL	£3,916	0.4%
Twin Sails Infant and Nursery School	1,503,195	42,305	£1,545,500	MPPFL	£1,552,551	MPPFL	£7,051	0.5%
Twynham Primary School	926,384	26,842	£953,226	MPPFL	£957,342	MPPFL	£4,116	0.4%
Winton Primary School	3,597,363	101,055	£3,698,418	MPPFL	£3,716,212	MPPFL	£17,794	0.5%

(b) Reduce all factor unit values below the NFF towards the maximum permitted (2.5% below)		22-23 Budget		22-23 Budget adjusted for SSG		23-24 Budget		Change	
	22-23 Budget	Supp. Grant							
<u>Middle-deemed Secondary</u>									
Broadstone Middle School	3,028,216	90,229	£3,118,445	MPPFL		£3,133,346	MPPFL	£14,901	0.5%
<u>Secondary</u>									
Avonbourne Boys' Academy	4,000,549	118,969	£4,119,518	formula		£4,139,366	MFG	£19,848	0.5%
Avonbourne Girls Academy	5,349,889	161,232	£5,511,121	formula		£5,537,903	MFG	£26,783	0.5%
Bournemouth School	4,728,869	132,621	£4,861,490	MPPFL		£4,890,179	MPPFL	£28,689	0.6%
Bournemouth School for Girls	4,926,638	138,714	£5,065,352	MPPFL		£5,094,978	MPPFL	£29,626	0.6%
Corfe Hills School	3,814,021	112,985	£3,927,006	formula		£3,945,833	MFG	£18,827	0.5%
Glenmoor Academy	4,983,199	157,806	£5,141,005	formula		£5,165,999	MFG	£24,994	0.5%
Highcliffe School	6,963,934	205,952	£7,169,886	MPPFL		£7,204,934	MPPFL	£35,048	0.5%
LeAF Studio	1,526,093	45,369	£1,571,462	formula		£1,578,630	MFG	£7,168	0.5%
Magna Academy	5,141,786	154,181	£5,295,967	formula		£5,321,634	MFG	£25,667	0.5%
Oak Academy	3,126,757	99,304	£3,226,061	formula		£3,241,424	MFG	£15,363	0.5%
Parkstone Grammar School	5,107,790	144,852	£5,252,642	MPPFL		£5,282,210	MPPFL	£29,568	0.6%
Poole Grammar School	4,956,823	137,539	£5,094,362	MPPFL		£5,126,113	MPPFL	£31,751	0.6%
Poole High School	9,152,767	276,588	£9,429,355	formula		£9,475,644	MFG	£46,289	0.5%
St Aldhelm's Academy	5,085,102	154,375	£5,239,477	MFG		£5,264,858	MFG	£25,381	0.5%
St Edward's Roman Catholic/Church of England School, Poole	5,222,595	154,910	£5,377,505	formula		£5,403,598	MFG	£26,093	0.5%
The Bishop of Winchester Academy	6,149,573	188,782	£6,338,355	formula		£6,369,266	MFG	£30,912	0.5%
The Bourne Academy	5,160,691	161,115	£5,321,806	formula		£5,347,665	MFG	£25,860	0.5%
The Cornerstone Academy	3,380,655	106,070	£3,486,725	MFG		£3,503,477	MFG	£16,752	0.5%
The Grange School	2,434,852	77,536	£2,512,388	formula		£2,524,230	MFG	£11,842	0.5%
Twynham School	7,377,289	223,919	£7,601,208	MPPFL		£7,638,417	MPPFL	£37,209	0.5%
Winton Academy	5,240,659	162,188	£5,402,847	formula		£5,429,105	MFG	£26,258	0.5%
<u>All-through</u>									
Livingstone Academy Bournemouth	1,563,634	49,673	£1,613,307	formula		£1,620,750	MFG	£7,443	0.5%
Parkfield School	2,634,704	75,170	£2,709,874	formula		£2,722,372	MFG	£12,498	0.5%
St Peter's Catholic Comprehensive School	8,389,831	242,516	£8,632,347	formula		£8,674,654	MFG	£42,307	0.5%
	236,850,552	6,851,562	£243,702,114			£244,925,720		£1,223,606	0.5%

(c) Reduce the MFG below 0.5% (minimum is 0%)			22-23 Budget		23-24 Budget		Change	
	22-23 Budget	Supp. Grant	adusted for SSG					
Primary								
Ad Astra Infant School	1,154,874	34,618	£1,189,492	formula	£1,218,974	formula	£29,482	2.5%
Avonwood Primary School	2,418,255	64,459	£2,482,714	MPPFL	£2,497,635	MPPFL	£14,921	0.6%
Baden-Powell and St Peter's Church of England Junior School	3,074,133	77,054	£3,151,187	MPPFL	£3,174,513	MPPFL	£23,326	0.7%
Bayside Academy	1,365,651	41,757	£1,407,408	MFG	£1,434,859	formula	£27,451	2.0%
Bearwood Primary and Nursery School	927,095	27,754	£954,849	formula	£978,872	formula	£24,023	2.5%
Bethany Church of England Junior School	1,713,252	51,934	£1,765,186	formula	£1,810,990	formula	£45,804	2.6%
Bishop Aldhelm's Church of England Primary School	2,566,921	71,218	£2,638,139	MPPFL	£2,650,781	MPPFL	£12,642	0.5%
Broadstone First School	1,292,920	35,609	£1,328,529	MPPFL	£1,335,200	MPPFL	£6,671	0.5%
Burton Church of England Primary School	1,490,524	42,136	£1,532,660	MPPFL	£1,547,093	formula	£14,432	0.9%
Canford Heath Infant School	1,519,963	42,705	£1,562,668	MPPFL	£1,569,663	MPPFL	£6,995	0.4%
Canford Heath Junior School	2,046,811	57,271	£2,104,082	MPPFL	£2,113,731	MPPFL	£9,649	0.5%
Christ The King Catholic Primary School	1,634,365	42,768	£1,677,133	MFG	£1,677,133	MFG	£0	0.0%
Christchurch Infant School	1,538,333	41,880	£1,580,213	MPPFL	£1,587,333	MPPFL	£7,120	0.5%
Christchurch Junior School	2,102,314	57,682	£2,159,996	MFG	£2,171,054	MPPFL	£11,058	0.5%
Corpus Christi Catholic Primary School	1,863,189	51,012	£1,914,201	formula	£1,962,295	formula	£48,093	2.5%
Courthill Infant School	1,535,359	41,818	£1,577,177	MPPFL	£1,585,619	MPPFL	£8,442	0.5%
Elm Academy	2,158,827	59,029	£2,217,856	MFG	£2,217,856	MFG	£0	0.0%
Hamworthy Park Junior School	2,002,882	59,106	£2,061,988	MPPFL	£2,102,255	formula	£40,268	2.0%
Haymoor Junior School	1,527,556	46,202	£1,573,758	MPPFL	£1,578,470	formula	£4,712	0.3%
Heatherlands Primary School	2,619,654	75,454	£2,695,108	MPPFL	£2,705,334	MPPFL	£10,226	0.4%
Heathlands Primary Academy	981,682	27,894	£1,009,576	MFG	£1,009,576	MFG	£0	0.0%
Highcliffe St Mark Primary School	2,784,355	71,320	£2,855,675	MPPFL	£2,875,355	MPPFL	£19,680	0.7%
Hill View Primary School	2,657,781	70,547	£2,728,328	MPPFL	£2,744,721	MPPFL	£16,393	0.6%
Hillbourne Primary School	1,044,920	32,318	£1,077,238	formula	£1,103,959	formula	£26,720	2.5%
Jewell Academy Bournemouth	1,875,005	49,368	£1,924,373	MFG	£1,924,373	MFG	£0	0.0%
King's Park Academy	2,888,921	83,210	£2,972,131	MFG	£2,972,131	MFG	£0	0.0%
Kingsleigh Primary School	3,455,795	102,543	£3,558,338	formula	£3,649,429	formula	£91,091	2.6%
Kinson Academy	997,043	30,802	£1,027,845	formula	£1,054,250	formula	£26,405	2.6%
Lilliput Church of England Infant School	1,512,211	38,516	£1,550,727	MPPFL	£1,561,631	MPPFL	£10,904	0.7%
Livingstone Road Infant School	1,092,877	30,920	£1,123,797	MFG	£1,123,797	MFG	£0	0.0%
Livingstone Road Junior School	1,200,467	36,115	£1,236,582	formula	£1,267,857	formula	£31,274	2.5%
Longfleet Church of England Primary School	2,703,093	72,792	£2,775,885	MPPFL	£2,791,433	MPPFL	£15,548	0.6%
Malmesbury Park Primary School	2,710,599	75,281	£2,785,880	MPPFL	£2,815,884	formula	£30,004	1.1%
Manorside Academy	1,807,537	53,470	£1,861,007	MFG	£1,872,315	formula	£11,308	0.6%
Merley First School	1,289,807	34,917	£1,324,724	MPPFL	£1,331,947	MPPFL	£7,223	0.5%
Moordown St John's Church of England Primary School	1,798,468	50,115	£1,848,583	MPPFL	£1,857,268	MPPFL	£8,685	0.5%
Mudeford Community Infants' School	819,572	23,192	£842,764	MFG	£855,651	formula	£12,887	1.5%

(c) Reduce the MFG below 0.5% (minimum is 0%)			22-23 Budget		22-23 Budget		23-24 Budget		Change	
	22-23 Budget	Supp. Grant	adusted for SSG							
Primary										
Mudeford Junior School	1,170,695	33,611	£1,204,306	formula		£1,233,951	formula	£29,645	2.5%	
Muscliff Primary School	2,626,210	72,479	£2,698,689	MPPFL		£2,711,890	MPPFL	£13,201	0.5%	
Oakdale Junior School	1,949,545	56,449	£2,005,994	MFG		£2,006,056	MPPFL	£62	0.0%	
Ocean Academy Poole	1,315,934	39,726	£1,355,660	formula		£1,389,676	formula	£34,016	2.5%	
Old Town Infant School and Nursery	810,394	24,300	£834,694	formula		£856,254	formula	£21,560	2.6%	
Pokesdown Community Primary School	1,770,405	52,071	£1,822,476	MPPFL		£1,828,225	MPPFL	£5,749	0.3%	
Queen's Park Academy	2,054,301	56,773	£2,111,074	MPPFL		£2,121,361	MPPFL	£10,287	0.5%	
Queen's Park Infant Academy	1,530,029	42,134	£1,572,163	MPPFL		£1,580,009	MPPFL	£7,846	0.5%	
Somerford Primary School	1,206,173	35,946	£1,242,119	formula		£1,273,726	formula	£31,607	2.5%	
Springdale First School	1,280,073	33,788	£1,313,861	MPPFL		£1,321,933	MPPFL	£8,072	0.6%	
St Clement's and St John's Church of England Infant School	1,331,455	38,334	£1,369,789	MFG		£1,395,750	formula	£25,961	1.9%	
St James' Church of England Primary Academy	1,771,649	50,213	£1,821,862	MPPFL		£1,829,609	MPPFL	£7,747	0.4%	
St Joseph's Catholic Primary School, Christchurch	999,790	28,894	£1,028,684	formula		£1,054,967	formula	£26,283	2.6%	
St Joseph's Catholic Primary School, Poole	1,645,064	46,357	£1,691,421	formula		£1,734,130	formula	£42,710	2.5%	
St Katharine's Church of England Primary School	1,877,368	47,514	£1,924,882	MFG		£1,933,638	MPPFL	£8,756	0.5%	
St Luke's Church of England Primary School	1,933,267	54,472	£1,987,739	MPPFL		£2,012,190	formula	£24,451	1.2%	
St Mark's Church of England Primary School	1,790,706	48,051	£1,838,757	MPPFL		£1,849,226	MPPFL	£10,469	0.6%	
St Mary's Catholic Primary School, Poole	1,761,619	47,117	£1,808,736	MPPFL		£1,819,159	MPPFL	£10,423	0.6%	
St Michael's Church of England Primary School	2,838,501	77,900	£2,916,401	formula		£2,989,539	formula	£73,138	2.5%	
St. Walburga's Catholic Primary School	1,784,444	45,319	£1,829,763	MPPFL		£1,842,824	MPPFL	£13,061	0.7%	
Stanley Green Infant Academy	1,027,619	29,680	£1,057,299	MPPFL		£1,081,320	formula	£24,021	2.3%	
Stourfield Infant School	1,447,602	40,121	£1,487,723	MFG		£1,494,266	MPPFL	£6,543	0.4%	
Stourfield Junior School	2,035,296	56,640	£2,091,936	MPPFL		£2,101,796	MPPFL	£9,860	0.5%	
Talbot Primary School	2,578,340	74,899	£2,653,239	formula		£2,720,925	formula	£67,686	2.6%	
The Epiphany School	1,781,063	45,987	£1,827,050	MPPFL		£1,839,303	MPPFL	£12,253	0.7%	
The Priory Church of England Primary School	886,142	25,204	£911,346	MPPFL		£920,890	formula	£9,544	1.0%	
Twin Sails Infant and Nursery School	1,503,195	42,305	£1,545,500	MPPFL		£1,570,265	formula	£24,765	1.6%	
Twynham Primary School	926,384	26,842	£953,226	MPPFL		£956,624	MPPFL	£3,398	0.4%	
Winton Primary School	3,597,363	101,055	£3,698,418	MPPFL		£3,714,963	MPPFL	£16,545	0.4%	

(c) Reduce the MFG below 0.5% (minimum is 0%)		22-23 Budget		22-23 Budget adjusted for SSG		23-24 Budget		Change	
	22-23 Budget	Supp. Grant							
Middle-deemed Secondary									
Broadstone Middle School	3,028,216	90,229	£3,118,445	MPPFL	£3,129,485	MPPFL	£11,040	0.4%	
Secondary									
Avonbourne Boys' Academy	4,000,549	118,969	£4,119,518	formula	£4,223,278	formula	£103,760	2.5%	
Avonbourne Girls Academy	5,349,889	161,232	£5,511,121	formula	£5,649,780	formula	£138,660	2.5%	
Bournemouth School	4,728,869	132,621	£4,861,490	MPPFL	£4,890,179	MPPFL	£28,689	0.6%	
Bournemouth School for Girls	4,926,638	138,714	£5,065,352	MPPFL	£5,094,978	MPPFL	£29,626	0.6%	
Corfe Hills School	3,814,021	112,985	£3,927,006	formula	£4,021,976	formula	£94,970	2.4%	
Glenmoor Academy	4,983,199	157,806	£5,141,005	formula	£5,269,335	formula	£128,330	2.5%	
Highcliffe School	6,963,934	205,952	£7,169,886	MPPFL	£7,202,194	MPPFL	£32,308	0.5%	
LeAF Studio	1,526,093	45,369	£1,571,462	formula	£1,610,331	formula	£38,869	2.5%	
Magna Academy	5,141,786	154,181	£5,295,967	formula	£5,430,019	formula	£134,052	2.5%	
Oak Academy	3,126,757	99,304	£3,226,061	formula	£3,309,786	formula	£83,725	2.6%	
Parkstone Grammar School	5,107,790	144,852	£5,252,642	MPPFL	£5,282,210	MPPFL	£29,568	0.6%	
Poole Grammar School	4,956,823	137,539	£5,094,362	MPPFL	£5,126,113	MPPFL	£31,751	0.6%	
Poole High School	9,152,767	276,588	£9,429,355	formula	£9,664,054	formula	£234,699	2.5%	
St Aldhelm's Academy	5,085,102	154,375	£5,239,477	MFG	£5,336,109	formula	£96,632	1.8%	
St Edward's Roman Catholic/Church of England School, Poole	5,222,595	154,910	£5,377,505	formula	£5,510,777	formula	£133,273	2.5%	
The Bishop of Winchester Academy	6,149,573	188,782	£6,338,355	formula	£6,497,388	formula	£159,033	2.5%	
The Bourne Academy	5,160,691	161,115	£5,321,806	formula	£5,459,066	formula	£137,260	2.6%	
The Cornerstone Academy	3,380,655	106,070	£3,486,725	MFG	£3,565,592	formula	£78,867	2.3%	
The Grange School	2,434,852	77,536	£2,512,388	formula	£2,576,709	formula	£64,321	2.6%	
Twynham School	7,377,289	223,919	£7,601,208	MPPFL	£7,727,639	formula	£126,431	1.7%	
Winton Academy	5,240,659	162,188	£5,402,847	formula	£5,537,089	formula	£134,242	2.5%	
All-through									
Livingstone Academy Bournemouth	1,563,634	49,673	£1,613,307	formula	£1,654,853	formula	£41,546	2.6%	
Parkfield School	2,634,704	75,170	£2,709,874	formula	£2,776,053	formula	£66,179	2.4%	
St Peter's Catholic Comprehensive School	8,389,831	242,516	£8,632,347	formula	£8,842,145	formula	£209,798	2.4%	
	236,850,552	6,851,562	£243,702,114		£247,302,839		£3,600,726	1.5%	

(d) Reduce MPPFL levels below NFF – same as 2022-23 (requires DfE approval and MFG also set below NFF)		22-23 Budget adjusted for SSG		23-24 Budget		Change	
	22-23 Budget	Supp. Grant					
Primary							
Ad Astra Infant School	1,154,874	34,618	£1,189,492	formula	£1,218,974	formula	£29,482 2.5%
Avonwood Primary School	2,418,255	64,459	£2,482,714	MPPFL	£2,494,488	MPPFL	£11,774 0.5%
Baden-Powell and St Peter's Church of England Junior School	3,074,133	77,054	£3,151,187	MPPFL	£3,166,222	MPPFL	£15,035 0.5%
Bayside Academy	1,365,651	41,757	£1,407,408	MFG	£1,434,859	formula	£27,451 2.0%
Bearwood Primary and Nursery School	927,095	27,754	£954,849	formula	£978,872	formula	£24,023 2.5%
Bethany Church of England Junior School	1,713,252	51,934	£1,765,186	formula	£1,810,990	formula	£45,804 2.6%
Bishop Aldhelm's Church of England Primary School	2,566,921	71,218	£2,638,139	MPPFL	£2,650,628	MPPFL	£12,490 0.5%
Broadstone First School	1,292,920	35,609	£1,328,529	MPPFL	£1,334,507	MPPFL	£5,978 0.4%
Burton Church of England Primary School	1,490,524	42,136	£1,532,660	MPPFL	£1,547,093	formula	£14,432 0.9%
Canford Heath Infant School	1,519,963	42,705	£1,562,668	MPPFL	£1,569,812	MPPFL	£7,144 0.5%
Canford Heath Junior School	2,046,811	57,271	£2,104,082	MPPFL	£2,113,922	MPPFL	£9,840 0.5%
Christ The King Catholic Primary School	1,634,365	42,768	£1,677,133	MFG	£1,684,851	MFG	£7,718 0.5%
Christchurch Infant School	1,538,333	41,880	£1,580,213	MPPFL	£1,587,246	MPPFL	£7,033 0.4%
Christchurch Junior School	2,102,314	57,682	£2,159,996	MFG	£2,170,115	MPPFL	£10,119 0.5%
Corpus Christi Catholic Primary School	1,863,189	51,012	£1,914,201	formula	£1,962,295	formula	£48,093 2.5%
Courthill Infant School	1,535,359	41,818	£1,577,177	MPPFL	£1,584,402	MPPFL	£7,225 0.5%
Elm Academy	2,158,827	59,029	£2,217,856	MFG	£2,228,280	MFG	£10,424 0.5%
Hamworthy Park Junior School	2,002,882	59,106	£2,061,988	MPPFL	£2,102,255	formula	£40,268 2.0%
Haymoor Junior School	1,527,556	46,202	£1,573,758	MPPFL	£1,580,941	MFG	£7,183 0.5%
Heatherlands Primary School	2,619,654	75,454	£2,695,108	MPPFL	£2,707,896	MPPFL	£12,788 0.5%
Heathlands Primary Academy	981,682	27,894	£1,009,576	MFG	£1,013,954	MFG	£4,379 0.4%
Highcliffe St Mark Primary School	2,784,355	71,320	£2,855,675	MPPFL	£2,869,252	MPPFL	£13,578 0.5%
Hill View Primary School	2,657,781	70,547	£2,728,328	MPPFL	£2,741,284	MPPFL	£12,956 0.5%
Hillbourne Primary School	1,044,920	32,318	£1,077,238	formula	£1,103,959	formula	£26,720 2.5%
Jewell Academy Bournemouth	1,875,005	49,368	£1,924,373	MFG	£1,933,317	MFG	£8,943 0.5%
King's Park Academy	2,888,921	83,210	£2,972,131	MFG	£2,986,310	MFG	£14,179 0.5%
Kingsleigh Primary School	3,455,795	102,543	£3,558,338	formula	£3,649,429	formula	£91,091 2.6%
Kinson Academy	997,043	30,802	£1,027,845	formula	£1,054,250	formula	£26,405 2.6%
Lilliput Church of England Infant School	1,512,211	38,516	£1,550,727	MPPFL	£1,557,808	MPPFL	£7,080 0.5%
Livingstone Road Infant School	1,092,877	30,920	£1,123,797	MFG	£1,128,755	MFG	£4,958 0.4%
Livingstone Road Junior School	1,200,467	36,115	£1,236,582	formula	£1,267,857	formula	£31,274 2.5%
Longfleet Church of England Primary School	2,703,093	72,792	£2,775,885	MPPFL	£2,789,065	MPPFL	£13,180 0.5%
Malmesbury Park Primary School	2,710,599	75,281	£2,785,880	MPPFL	£2,815,884	formula	£30,004 1.1%
Manorside Academy	1,807,537	53,470	£1,861,007	MFG	£1,872,315	formula	£11,308 0.6%
Merley First School	1,289,807	34,917	£1,324,724	MPPFL	£1,330,677	MPPFL	£5,953 0.4%
Moordown St John's Church of England Primary School	1,798,468	50,115	£1,848,583	MPPFL	£1,857,150	MPPFL	£8,567 0.5%
Mudford Community Infants' School	819,572	23,192	£842,764	MFG	£855,651	formula	£12,887 1.5%

(d) Reduce MPPFL levels below NFF – same as 2022-23 (requires DfE approval and MFG also set below NFF)			22-23 Budget adusted for SSG		23-24 Budget		Change	
	22-23 Budget	Supp. Grant						
Primary								
Mudeford Junior School	1,170,695	33,611	£1,204,306	formula	£1,233,951	formula	£29,645	2.5%
Muscliff Primary School	2,626,210	72,479	£2,698,689	MPPFL	£2,711,463	MPPFL	£12,773	0.5%
Oakdale Junior School	1,949,545	56,449	£2,005,994	MFG	£2,015,309	MPPFL	£9,315	0.5%
Ocean Academy Poole	1,315,934	39,726	£1,355,660	formula	£1,389,676	formula	£34,016	2.5%
Old Town Infant School and Nursery	810,394	24,300	£834,694	formula	£856,254	formula	£21,560	2.6%
Pokesdown Community Primary School	1,770,405	52,071	£1,822,476	MPPFL	£1,830,904	MPPFL	£8,428	0.5%
Queen's Park Academy	2,054,301	56,773	£2,111,074	MPPFL	£2,120,933	MPPFL	£9,859	0.5%
Queen's Park Infant Academy	1,530,029	42,134	£1,572,163	MPPFL	£1,579,347	MFG	£7,184	0.5%
Somerford Primary School	1,206,173	35,946	£1,242,119	formula	£1,273,726	formula	£31,607	2.5%
Springdale First School	1,280,073	33,788	£1,313,861	MPPFL	£1,319,767	MPPFL	£5,905	0.4%
St Clement's and St John's Church of England Infant School	1,331,455	38,334	£1,369,789	MFG	£1,395,750	formula	£25,961	1.9%
St James' Church of England Primary Academy	1,771,649	50,213	£1,821,862	MPPFL	£1,830,302	MPPFL	£8,440	0.5%
St Joseph's Catholic Primary School, Christchurch	999,790	28,894	£1,028,684	formula	£1,054,967	formula	£26,283	2.6%
St Joseph's Catholic Primary School, Poole	1,645,064	46,357	£1,691,421	formula	£1,734,130	formula	£42,710	2.5%
St Katharine's Church of England Primary School	1,877,368	47,514	£1,924,882	MFG	£1,933,823	MPPFL	£8,941	0.5%
St Luke's Church of England Primary School	1,933,267	54,472	£1,987,739	MPPFL	£2,012,190	formula	£24,451	1.2%
St Mark's Church of England Primary School	1,790,706	48,051	£1,838,757	MPPFL	£1,847,271	MPPFL	£8,514	0.5%
St Mary's Catholic Primary School, Poole	1,761,619	47,117	£1,808,736	MPPFL	£1,817,096	MPPFL	£8,360	0.5%
St Michael's Church of England Primary School	2,838,501	77,900	£2,916,401	formula	£2,989,539	formula	£73,138	2.5%
St. Walburga's Catholic Primary School	1,784,444	45,319	£1,829,763	MPPFL	£1,838,242	MPPFL	£8,479	0.5%
Stanley Green Infant Academy	1,027,619	29,680	£1,057,299	MPPFL	£1,081,320	formula	£24,021	2.3%
Stourfield Infant School	1,447,602	40,121	£1,487,723	MFG	£1,494,495	MPPFL	£6,772	0.5%
Stourfield Junior School	2,035,296	56,640	£2,091,936	MPPFL	£2,101,708	MPPFL	£9,773	0.5%
Talbot Primary School	2,578,340	74,899	£2,653,239	formula	£2,720,925	formula	£67,686	2.6%
The Epiphany School	1,781,063	45,987	£1,827,050	MPPFL	£1,835,511	MPPFL	£8,461	0.5%
The Priory Church of England Primary School	886,142	25,204	£911,346	MPPFL	£920,890	formula	£9,544	1.0%
Twin Sails Infant and Nursery School	1,503,195	42,305	£1,545,500	MPPFL	£1,570,265	formula	£24,765	1.6%
Twynham Primary School	926,384	26,842	£953,226	MPPFL	£957,326	MPPFL	£4,100	0.4%
Winton Primary School	3,597,363	101,055	£3,698,418	MPPFL	£3,716,196	MPPFL	£17,778	0.5%

(d) Reduce MPPFL levels below NFF – same as 2022-23 (requires DfE approval and MFG also set below NFF)			22-23 Budget adusted for SSG		23-24 Budget		Change	
	22-23 Budget	Supp. Grant						
<u>Middle-deemed Secondary</u>								
Broadstone Middle School	3,028,216	90,229	£3,118,445	MPPFL	£3,133,330	MPPFL	£14,885	0.5%
<u>Secondary</u>								
Avonbourne Boys' Academy	4,000,549	118,969	£4,119,518	formula	£4,223,278	formula	£103,760	2.5%
Avonbourne Girls Academy	5,349,889	161,232	£5,511,121	formula	£5,649,780	formula	£138,660	2.5%
Bournemouth School	4,728,869	132,621	£4,861,490	MPPFL	£4,884,967	MPPFL	£23,477	0.5%
Bournemouth School for Girls	4,926,638	138,714	£5,065,352	MPPFL	£5,089,881	MPPFL	£24,529	0.5%
Corfe Hills School	3,814,021	112,985	£3,927,006	formula	£4,021,976	formula	£94,970	2.4%
Glenmoor Academy	4,983,199	157,806	£5,141,005	formula	£5,269,335	formula	£128,330	2.5%
Highcliffe School	6,963,934	205,952	£7,169,886	MPPFL	£7,204,918	MFG	£35,032	0.5%
LeAF Studio	1,526,093	45,369	£1,571,462	formula	£1,610,331	formula	£38,869	2.5%
Magna Academy	5,141,786	154,181	£5,295,967	formula	£5,430,019	formula	£134,052	2.5%
Oak Academy	3,126,757	99,304	£3,226,061	formula	£3,309,786	formula	£83,725	2.6%
Parkstone Grammar School	5,107,790	144,852	£5,252,642	MPPFL	£5,278,086	MPPFL	£25,444	0.5%
Poole Grammar School	4,956,823	137,539	£5,094,362	MPPFL	£5,119,024	MPPFL	£24,662	0.5%
Poole High School	9,152,767	276,588	£9,429,355	formula	£9,664,054	formula	£234,699	2.5%
St Aldhelm's Academy	5,085,102	154,375	£5,239,477	MFG	£5,336,109	formula	£96,632	1.8%
St Edward's Roman Catholic/Church of England School, Poole	5,222,595	154,910	£5,377,505	formula	£5,510,777	formula	£133,273	2.5%
The Bishop of Winchester Academy	6,149,573	188,782	£6,338,355	formula	£6,497,388	formula	£159,033	2.5%
The Bourne Academy	5,160,691	161,115	£5,321,806	formula	£5,459,066	formula	£137,260	2.6%
The Cornerstone Academy	3,380,655	106,070	£3,486,725	MFG	£3,565,592	formula	£78,867	2.3%
The Grange School	2,434,852	77,536	£2,512,388	formula	£2,576,709	formula	£64,321	2.6%
Twynham School	7,377,289	223,919	£7,601,208	MPPFL	£7,727,639	formula	£126,431	1.7%
Winton Academy	5,240,659	162,188	£5,402,847	formula	£5,537,089	formula	£134,242	2.5%
<u>All-through</u>								
Livingstone Academy Bournemouth	1,563,634	49,673	£1,613,307	formula	£1,654,853	formula	£41,546	2.6%
Parkfield School	2,634,704	75,170	£2,709,874	formula	£2,776,053	formula	£66,179	2.4%
St Peter's Catholic Comprehensive School	8,389,831	242,516	£8,632,347	formula	£8,842,145	formula	£209,798	2.4%
	236,850,552	6,851,562	£243,702,114		£247,311,024		£3,608,911	1.5%

(e) Establish a cap on gains of 0.5%		22-23 Budget		22-23 Budget		23-24 Budget		Change	
	22-23 Budget	Supp. Grant	adusted for SSG						
Primary									
Ad Astra Infant School	1,154,874	34,618	£1,189,492	formula	£1,194,769	MFG	£5,277	0.4%	
Avonwood Primary School	2,418,255	64,459	£2,482,714	MPPFL	£2,497,635	MPPFL	£14,921	0.6%	
Baden-Powell and St Peter's Church of England Junior School	3,074,133	77,054	£3,151,187	MPPFL	£3,174,513	MPPFL	£23,326	0.7%	
Bayside Academy	1,365,651	41,757	£1,407,408	MFG	£1,413,786	MFG	£6,377	0.5%	
Bearwood Primary and Nursery School	927,095	27,754	£954,849	formula	£958,953	MFG	£4,105	0.4%	
Bethany Church of England Junior School	1,713,252	51,934	£1,765,186	formula	£1,773,336	MFG	£8,150	0.5%	
Bishop Aldhelm's Church of England Primary School	2,566,921	71,218	£2,638,139	MPPFL	£2,650,781	MPPFL	£12,642	0.5%	
Broadstone First School	1,292,920	35,609	£1,328,529	MPPFL	£1,335,200	MPPFL	£6,671	0.5%	
Burton Church of England Primary School	1,490,524	42,136	£1,532,660	MPPFL	£1,539,545	MFG	£6,885	0.4%	
Canford Heath Infant School	1,519,963	42,705	£1,562,668	MPPFL	£1,569,812	MPPFL	£7,144	0.5%	
Canford Heath Junior School	2,046,811	57,271	£2,104,082	MPPFL	£2,113,922	MPPFL	£9,840	0.5%	
Christ The King Catholic Primary School	1,634,365	42,768	£1,677,133	MFG	£1,684,851	MFG	£7,718	0.5%	
Christchurch Infant School	1,538,333	41,880	£1,580,213	MPPFL	£1,587,333	MPPFL	£7,120	0.5%	
Christchurch Junior School	2,102,314	57,682	£2,159,996	MFG	£2,171,054	MPPFL	£11,058	0.5%	
Corpus Christi Catholic Primary School	1,863,189	51,012	£1,914,201	formula	£1,923,095	MFG	£8,894	0.5%	
Courthill Infant School	1,535,359	41,818	£1,577,177	MPPFL	£1,585,619	MPPFL	£8,442	0.5%	
Elm Academy	2,158,827	59,029	£2,217,856	MFG	£2,228,280	MFG	£10,424	0.5%	
Hamworthy Park Junior School	2,002,882	59,106	£2,061,988	MPPFL	£2,071,623	MFG	£9,636	0.5%	
Haymoor Junior School	1,527,556	46,202	£1,573,758	MPPFL	£1,580,941	MFG	£7,183	0.5%	
Heatherlands Primary School	2,619,654	75,454	£2,695,108	MPPFL	£2,707,896	MPPFL	£12,788	0.5%	
Heathlands Primary Academy	981,682	27,894	£1,009,576	MFG	£1,013,954	MFG	£4,379	0.4%	
Highcliffe St Mark Primary School	2,784,355	71,320	£2,855,675	MPPFL	£2,875,355	MPPFL	£19,680	0.7%	
Hill View Primary School	2,657,781	70,547	£2,728,328	MPPFL	£2,744,721	MPPFL	£16,393	0.6%	
Hillbourne Primary School	1,044,920	32,318	£1,077,238	formula	£1,081,841	MFG	£4,603	0.4%	
Jewell Academy Bournemouth	1,875,005	49,368	£1,924,373	MFG	£1,933,317	MFG	£8,943	0.5%	
King's Park Academy	2,888,921	83,210	£2,972,131	MFG	£2,986,310	MFG	£14,179	0.5%	
Kingsleigh Primary School	3,455,795	102,543	£3,558,338	formula	£3,575,396	MFG	£17,058	0.5%	
Kinson Academy	997,043	30,802	£1,027,845	formula	£1,032,309	MFG	£4,465	0.4%	
Lilliput Church of England Infant School	1,512,211	38,516	£1,550,727	MPPFL	£1,561,631	MPPFL	£10,904	0.7%	
Livingstone Road Infant School	1,092,877	30,920	£1,123,797	MFG	£1,128,755	MFG	£4,958	0.4%	
Livingstone Road Junior School	1,200,467	36,115	£1,236,582	formula	£1,242,085	MFG	£5,502	0.4%	
Longfleet Church of England Primary School	2,703,093	72,792	£2,775,885	MPPFL	£2,791,433	MPPFL	£15,548	0.6%	
Malmesbury Park Primary School	2,710,599	75,281	£2,785,880	MPPFL	£2,799,219	MFG	£13,339	0.5%	
Manorside Academy	1,807,537	53,470	£1,861,007	MFG	£1,869,643	MFG	£8,635	0.5%	
Merley First School	1,289,807	34,917	£1,324,724	MPPFL	£1,331,947	MPPFL	£7,223	0.5%	
Moordown St John's Church of England Primary School	1,798,468	50,115	£1,848,583	MPPFL	£1,857,268	MPPFL	£8,685	0.5%	
Mudford Community Infants' School	819,572	23,192	£842,764	MFG	£846,252	MFG	£3,488	0.4%	

(e) Establish a cap on gains of 0.5%		22-23 Budget		22-23 Budget		23-24 Budget		Change	
	22-23 Budget	Supp. Grant	adusted for SSG						
Primary									
Mudeford Junior School	1,170,695	33,611	£1,204,306	formula	£1,209,585	MFG	£5,279	0.4%	
Musdiff Primary School	2,626,210	72,479	£2,698,689	MPPFL	£2,711,890	MPPFL	£13,201	0.5%	
Oakdale Junior School	1,949,545	56,449	£2,005,994	MFG	£2,015,309	MPPFL	£9,315	0.5%	
Ocean Academy Poole	1,315,934	39,726	£1,355,660	formula	£1,361,758	MFG	£6,097	0.4%	
Old Town Infant School and Nursery	810,394	24,300	£834,694	formula	£838,201	MFG	£3,508	0.4%	
Pokesdown Community Primary School	1,770,405	52,071	£1,822,476	MPPFL	£1,830,904	MPPFL	£8,428	0.5%	
Queen's Park Academy	2,054,301	56,773	£2,111,074	MPPFL	£2,121,361	MPPFL	£10,287	0.5%	
Queen's Park Infant Academy	1,530,029	42,134	£1,572,163	MPPFL	£1,580,009	MPPFL	£7,846	0.5%	
Somerford Primary School	1,206,173	35,946	£1,242,119	formula	£1,247,498	MFG	£5,379	0.4%	
Springdale First School	1,280,073	33,788	£1,313,861	MPPFL	£1,321,933	MPPFL	£8,072	0.6%	
St Clement's and St John's Church of England Infant School	1,331,455	38,334	£1,369,789	MFG	£1,375,978	MFG	£6,189	0.5%	
St James' Church of England Primary Academy	1,771,649	50,213	£1,821,862	MPPFL	£1,830,302	MPPFL	£8,440	0.5%	
St Joseph's Catholic Primary School, Christchurch	999,790	28,894	£1,028,684	formula	£1,033,168	MFG	£4,484	0.4%	
St Joseph's Catholic Primary School, Poole	1,645,064	46,357	£1,691,421	formula	£1,699,203	MFG	£7,783	0.5%	
St Katharine's Church of England Primary School	1,877,368	47,514	£1,924,882	MFG	£1,933,823	MPPFL	£8,941	0.5%	
St Luke's Church of England Primary School	1,933,267	54,472	£1,987,739	MPPFL	£1,996,997	MFG	£9,258	0.5%	
St Mark's Church of England Primary School	1,790,706	48,051	£1,838,757	MPPFL	£1,849,226	MPPFL	£10,469	0.6%	
St Mary's Catholic Primary School, Poole	1,761,619	47,117	£1,808,736	MPPFL	£1,819,159	MPPFL	£10,423	0.6%	
St Michael's Church of England Primary School	2,838,501	77,900	£2,916,401	formula	£2,930,293	MFG	£13,892	0.5%	
St. Walburga's Catholic Primary School	1,784,444	45,319	£1,829,763	MPPFL	£1,842,824	MPPFL	£13,061	0.7%	
Stanley Green Infant Academy	1,027,619	29,680	£1,057,299	MPPFL	£1,061,926	MFG	£4,626	0.4%	
Stourfield Infant School	1,447,602	40,121	£1,487,723	MFG	£1,494,495	MPPFL	£6,772	0.5%	
Stourfield Junior School	2,035,296	56,640	£2,091,936	MPPFL	£2,101,796	MPPFL	£9,860	0.5%	
Talbot Primary School	2,578,340	74,899	£2,653,239	formula	£2,665,822	MFG	£12,583	0.5%	
The Epiphany School	1,781,063	45,987	£1,827,050	MPPFL	£1,839,303	MPPFL	£12,253	0.7%	
The Priory Church of England Primary School	886,142	25,204	£911,346	MPPFL	£915,246	MFG	£3,900	0.4%	
Twin Sails Infant and Nursery School	1,503,195	42,305	£1,545,500	MPPFL	£1,552,535	MFG	£7,035	0.5%	
Twynham Primary School	926,384	26,842	£953,226	MPPFL	£957,326	MPPFL	£4,100	0.4%	
Winton Primary School	3,597,363	101,055	£3,698,418	MPPFL	£3,716,196	MPPFL	£17,778	0.5%	

(e) Establish a cap on gains of 0.5%		22-23 Budget		22-23 Budget adjusted for SSG	23-24 Budget		Change	
	22-23 Budget	Supp. Grant						
<u>Middle-deemed Secondary</u>								
Broadstone Middle School	3,028,216	90,229	£3,118,445	MPPFL	£3,133,330	MPPFL	£14,885	0.5%
<u>Secondary</u>								
Avonbourne Boys' Academy	4,000,549	118,969	£4,119,518	formula	£4,139,350	MFG	£19,832	0.5%
Avonbourne Girls Academy	5,349,889	161,232	£5,511,121	formula	£5,537,887	MFG	£26,767	0.5%
Bournemouth School	4,728,869	132,621	£4,861,490	MPPFL	£4,890,179	MPPFL	£28,689	0.6%
Bournemouth School for Girls	4,926,638	138,714	£5,065,352	MPPFL	£5,094,978	MPPFL	£29,626	0.6%
Corfe Hills School	3,814,021	112,985	£3,927,006	formula	£3,945,817	MFG	£18,811	0.5%
Glenmoor Academy	4,983,199	157,806	£5,141,005	formula	£5,165,983	MFG	£24,978	0.5%
Highcliffe School	6,963,934	205,952	£7,169,886	MPPFL	£7,204,918	MPPFL	£35,032	0.5%
LeAF Studio	1,526,093	45,369	£1,571,462	formula	£1,578,614	MFG	£7,152	0.5%
Magna Academy	5,141,786	154,181	£5,295,967	formula	£5,321,618	MFG	£25,651	0.5%
Oak Academy	3,126,757	99,304	£3,226,061	formula	£3,241,408	MFG	£15,347	0.5%
Parkstone Grammar School	5,107,790	144,852	£5,252,642	MPPFL	£5,282,210	MPPFL	£29,568	0.6%
Poole Grammar School	4,956,823	137,539	£5,094,362	MPPFL	£5,126,113	MPPFL	£31,751	0.6%
Poole High School	9,152,767	276,588	£9,429,355	formula	£9,475,628	MFG	£46,273	0.5%
St Aldhelm's Academy	5,085,102	154,375	£5,239,477	MFG	£5,264,842	MFG	£25,365	0.5%
St Edward's Roman Catholic/Church of England School, Poole	5,222,595	154,910	£5,377,505	formula	£5,403,582	MFG	£26,077	0.5%
The Bishop of Winchester Academy	6,149,573	188,782	£6,338,355	formula	£6,369,250	MFG	£30,896	0.5%
The Bourne Academy	5,160,691	161,115	£5,321,806	formula	£5,347,649	MFG	£25,844	0.5%
The Cornerstone Academy	3,380,655	106,070	£3,486,725	MFG	£3,503,461	MFG	£16,736	0.5%
The Grange School	2,434,852	77,536	£2,512,388	formula	£2,524,214	MFG	£11,826	0.5%
Twynham School	7,377,289	223,919	£7,601,208	MPPFL	£7,638,401	MFG	£37,193	0.5%
Winton Academy	5,240,659	162,188	£5,402,847	formula	£5,429,089	MFG	£26,242	0.5%
<u>All-through</u>								
Livingstone Academy Bournemouth	1,563,634	49,673	£1,613,307	formula	£1,620,734	MFG	£7,427	0.5%
Parkfield School	2,634,704	75,170	£2,709,874	formula	£2,722,349	MFG	£12,475	0.5%
St Peter's Catholic Comprehensive School	8,389,831	242,516	£8,632,347	formula	£8,674,638	MFG	£42,291	0.5%
	236,850,552	6,851,562	£243,702,114		£244,924,688		£1,222,575	0.5%

(f) If all levers maximised			22-23 Budget				23-24 Budget		Change	
	22-23 Budget	Supp. Grant	adusted for SSG							
Primary										
Ad Astra Infant School	1,154,874	34,618	£1,189,492	formula	£1,189,492	MFG		£0	0.0%	
Avonwood Primary School	2,418,255	64,459	£2,482,714	MPPFL	£2,482,714	MPPFL		£0	0.0%	
Baden-Powell and St Peter's Church of England Junior School	3,074,133	77,054	£3,151,187	MPPFL	£3,151,187	MPPFL		£0	0.0%	
Bayside Academy	1,365,651	41,757	£1,407,408	MFG	£1,407,408	MFG		£0	0.0%	
Bearwood Primary and Nursery School	927,095	27,754	£954,849	formula	£954,849	MFG		£0	0.0%	
Bethany Church of England Junior School	1,713,252	51,934	£1,765,186	formula	£1,765,899	formula		£713	0.0%	
Bishop Aldhelm's Church of England Primary School	2,566,921	71,218	£2,638,139	MPPFL	£2,638,139	MPPFL		£0	0.0%	
Broadstone First School	1,292,920	35,609	£1,328,529	MPPFL	£1,328,529	MPPFL		£0	0.0%	
Burton Church of England Primary School	1,490,524	42,136	£1,532,660	MPPFL	£1,532,660	MFG		£0	0.0%	
Canford Heath Infant School	1,519,963	42,705	£1,562,668	MPPFL	£1,562,668	MPPFL		£0	0.0%	
Canford Heath Junior School	2,046,811	57,271	£2,104,082	MPPFL	£2,104,082	MPPFL		£0	0.0%	
Christ The King Catholic Primary School	1,634,365	42,768	£1,677,133	MFG	£1,677,133	MFG		£0	0.0%	
Christchurch Infant School	1,538,333	41,880	£1,580,213	MPPFL	£1,580,213	MPPFL		£0	0.0%	
Christchurch Junior School	2,102,314	57,682	£2,159,996	MFG	£2,159,996	MPPFL		£0	0.0%	
Corpus Christi Catholic Primary School	1,863,189	51,012	£1,914,201	formula	£1,914,201	MFG		£0	0.0%	
Courthill Infant School	1,535,359	41,818	£1,577,177	MPPFL	£1,577,177	MPPFL		£0	0.0%	
Elm Academy	2,158,827	59,029	£2,217,856	MFG	£2,217,856	MFG		£0	0.0%	
Hamworthy Park Junior School	2,002,882	59,106	£2,061,988	MPPFL	£2,061,988	MFG		£0	0.0%	
Haymoor Junior School	1,527,556	46,202	£1,573,758	MPPFL	£1,573,758	MFG		£0	0.0%	
Heatherlands Primary School	2,619,654	75,454	£2,695,108	MPPFL	£2,695,108	MPPFL		£0	0.0%	
Heathlands Primary Academy	981,682	27,894	£1,009,576	MFG	£1,009,576	MFG		£0	0.0%	
Highcliffe St Mark Primary School	2,784,355	71,320	£2,855,675	MPPFL	£2,855,675	MPPFL		£0	0.0%	
Hill View Primary School	2,657,781	70,547	£2,728,328	MPPFL	£2,728,328	MPPFL		£0	0.0%	
Hillbourne Primary School	1,044,920	32,318	£1,077,238	formula	£1,077,238	MFG		£0	0.0%	
Jewell Academy Bournemouth	1,875,005	49,368	£1,924,373	MFG	£1,924,373	MFG		£0	0.0%	
King's Park Academy	2,888,921	83,210	£2,972,131	MFG	£2,972,131	MFG		£0	0.0%	
Kingsleigh Primary School	3,455,795	102,543	£3,558,338	formula	£3,558,664	formula		£326	0.0%	
Kinson Academy	997,043	30,802	£1,027,845	formula	£1,028,066	formula		£221	0.0%	
Lilliput Church of England Infant School	1,512,211	38,516	£1,550,727	MPPFL	£1,550,727	MPPFL		£0	0.0%	
Livingstone Road Infant School	1,092,877	30,920	£1,123,797	MFG	£1,123,797	MFG		£0	0.0%	
Livingstone Road Junior School	1,200,467	36,115	£1,236,582	formula	£1,236,582	MFG		£0	0.0%	
Longfleet Church of England Primary School	2,703,093	72,792	£2,775,885	MPPFL	£2,775,885	MPPFL		£0	0.0%	
Malmesbury Park Primary School	2,710,599	75,281	£2,785,880	MPPFL	£2,785,880	MFG		£0	0.0%	
Manorside Academy	1,807,537	53,470	£1,861,007	MFG	£1,861,007	MFG		£0	0.0%	
Merley First School	1,289,807	34,917	£1,324,724	MPPFL	£1,324,724	MPPFL		£0	0.0%	
Moordown St John's Church of England Primary School	1,798,468	50,115	£1,848,583	MPPFL	£1,848,583	MPPFL		£0	0.0%	
Mudeford Community Infants' School	819,572	23,192	£842,764	MFG	£842,764	MFG		£0	0.0%	

(f) If all levers maximised			22-23 Budget		23-24 Budget		Change	
	22-23 Budget	Supp. Grant	adusted for SSG					
Primary								
Mudeford Junior School	1,170,695	33,611	£1,204,306	formula	£1,204,306	MFG	£0	0.0%
Muscliff Primary School	2,626,210	72,479	£2,698,689	MPPFL	£2,698,689	MPPFL	£0	0.0%
Oakdale Junior School	1,949,545	56,449	£2,005,994	MFG	£2,005,994	MPPFL	£0	0.0%
Ocean Academy Poole	1,315,934	39,726	£1,355,660	formula	£1,355,660	MFG	£0	0.0%
Old Town Infant School and Nursery	810,394	24,300	£834,694	formula	£834,977	formula	£283	0.0%
Pokesdown Community Primary School	1,770,405	52,071	£1,822,476	MPPFL	£1,822,476	MPPFL	£0	0.0%
Queen's Park Academy	2,054,301	56,773	£2,111,074	MPPFL	£2,111,074	MPPFL	£0	0.0%
Queen's Park Infant Academy	1,530,029	42,134	£1,572,163	MPPFL	£1,572,163	MFG	£0	0.0%
Somerford Primary School	1,206,173	35,946	£1,242,119	formula	£1,242,840	formula	£721	0.1%
Springdale First School	1,280,073	33,788	£1,313,861	MPPFL	£1,313,861	MPPFL	£0	0.0%
St Clement's and St John's Church of England Infant School	1,331,455	38,334	£1,369,789	MFG	£1,369,789	MFG	£0	0.0%
St James' Church of England Primary Academy	1,771,649	50,213	£1,821,862	MPPFL	£1,821,862	MPPFL	£0	0.0%
St Joseph's Catholic Primary School, Christchurch	999,790	28,894	£1,028,684	formula	£1,028,689	formula	£5	0.0%
St Joseph's Catholic Primary School, Poole	1,645,064	46,357	£1,691,421	formula	£1,691,421	MFG	£0	0.0%
St Katharine's Church of England Primary School	1,877,368	47,514	£1,924,882	MFG	£1,924,882	MPPFL	£0	0.0%
St Luke's Church of England Primary School	1,933,267	54,472	£1,987,739	MPPFL	£1,987,739	MFG	£0	0.0%
St Mark's Church of England Primary School	1,790,706	48,051	£1,838,757	MPPFL	£1,838,757	MPPFL	£0	0.0%
St Mary's Catholic Primary School, Poole	1,761,619	47,117	£1,808,736	MPPFL	£1,808,736	MPPFL	£0	0.0%
St Michael's Church of England Primary School	2,838,501	77,900	£2,916,401	formula	£2,916,401	MFG	£0	0.0%
St. Walburga's Catholic Primary School	1,784,444	45,319	£1,829,763	MPPFL	£1,829,763	MPPFL	£0	0.0%
Stanley Green Infant Academy	1,027,619	29,680	£1,057,299	MPPFL	£1,057,299	MFG	£0	0.0%
Stourfield Infant School	1,447,602	40,121	£1,487,723	MFG	£1,487,723	MPPFL	£0	0.0%
Stourfield Junior School	2,035,296	56,640	£2,091,936	MPPFL	£2,091,936	MPPFL	£0	0.0%
Talbot Primary School	2,578,340	74,899	£2,653,239	formula	£2,653,239	MFG	£0	0.0%
The Epiphany School	1,781,063	45,987	£1,827,050	MPPFL	£1,827,050	MPPFL	£0	0.0%
The Priory Church of England Primary School	886,142	25,204	£911,346	MPPFL	£911,346	MFG	£0	0.0%
Twin Sails Infant and Nursery School	1,503,195	42,305	£1,545,500	MPPFL	£1,545,500	MFG	£0	0.0%
Twynham Primary School	926,384	26,842	£953,226	MPPFL	£953,226	MPPFL	£0	0.0%
Winton Primary School	3,597,363	101,055	£3,698,418	MPPFL	£3,698,418	MPPFL	£0	0.0%

(f) If all levers maximised			22-23 Budget		23-24 Budget		Change	
	22-23 Budget	Supp. Grant	adusted for SSG					
<u>Middle-deemed Secondary</u>								
Broadstone Middle School	3,028,216	90,229	£3,118,445	MPPFL	£3,118,445	MFG	£0	0.0%
<u>Secondary</u>								
Avonbourne Boys' Academy	4,000,549	118,969	£4,119,518	formula	£4,119,518	MFG	£0	0.0%
Avonbourne Girls Academy	5,349,889	161,232	£5,511,121	formula	£5,511,121	MFG	£0	0.0%
Bournemouth School	4,728,869	132,621	£4,861,490	MPPFL	£4,861,490	MPPFL	£0	0.0%
Bournemouth School for Girls	4,926,638	138,714	£5,065,352	MPPFL	£5,065,352	MPPFL	£0	0.0%
Corfe Hills School	3,814,021	112,985	£3,927,006	formula	£3,927,006	MFG	£0	0.0%
Glenmoor Academy	4,983,199	157,806	£5,141,005	formula	£5,141,005	MFG	£0	0.0%
Highcliffe School	6,963,934	205,952	£7,169,886	MPPFL	£7,169,886	MFG	£0	0.0%
LeAF Studio	1,526,093	45,369	£1,571,462	formula	£1,571,462	MFG	£0	0.0%
Magna Academy	5,141,786	154,181	£5,295,967	formula	£5,296,578	formula	£611	0.0%
Oak Academy	3,126,757	99,304	£3,226,061	formula	£3,228,124	formula	£2,063	0.1%
Parkstone Grammar School	5,107,790	144,852	£5,252,642	MPPFL	£5,252,642	MPPFL	£0	0.0%
Poole Grammar School	4,956,823	137,539	£5,094,362	MPPFL	£5,094,362	MPPFL	£0	0.0%
Poole High School	9,152,767	276,588	£9,429,355	formula	£9,429,355	MFG	£0	0.0%
St Aldhelm's Academy	5,085,102	154,375	£5,239,477	MFG	£5,239,477	MFG	£0	0.0%
St Edward's Roman Catholic/Church of England School, Poole	5,222,595	154,910	£5,377,505	formula	£5,377,505	MFG	£0	0.0%
The Bishop of Winchester Academy	6,149,573	188,782	£6,338,355	formula	£6,338,355	MFG	£0	0.0%
The Bourne Academy	5,160,691	161,115	£5,321,806	formula	£5,323,221	formula	£1,415	0.0%
The Cornerstone Academy	3,380,655	106,070	£3,486,725	MFG	£3,486,725	MFG	£0	0.0%
The Grange School	2,434,852	77,536	£2,512,388	formula	£2,513,141	formula	£753	0.0%
Twynham School	7,377,289	223,919	£7,601,208	MPPFL	£7,601,208	MFG	£0	0.0%
Winton Academy	5,240,659	162,188	£5,402,847	formula	£5,402,847	MFG	£0	0.0%
<u>All-through</u>								
Livingstone Academy Bournemouth	1,563,634	49,673	£1,613,307	formula	£1,613,483	formula	£176	0.0%
Parkfield School	2,634,704	75,170	£2,709,874	formula	£2,709,874	MFG	£0	0.0%
St Peter's Catholic Comprehensive School	8,389,831	242,516	£8,632,347	formula	£8,632,347	MFG	£0	0.0%
	236,850,552	6,851,562	£243,702,114		£243,709,402		£7,288	0.0%

Proposed 2023-24 growth fund policy

The proposed policy is a continuation of the existing policy agreed and would fund the following:

Permanent Expansions

- It is not expected in the foreseeable future for a permanently expanding school to reduce their PAN to pre-expansion levels.
- For growth added from September 2020, funding is provided through the formula by considering all formula factors, not just the basic entitlement. This is achieved by taking an average prevalence rate across all pupils-led factors and by increasing pupil numbers accordingly. Each FE will be based on 30 pupils, funded for the period Sep – Mar (adjusted by DfE to academic year for academies). Such funding will be provided through implicit growth in the formula, rather than the explicit growth fund.
- Growth added pre-September 2020 is funded at the age relevant BE rate per place, funded for the period Sep -March. This element as for bulge classes funds places that are not occupied at the October census at 30% of the pro-rated BE rate per unoccupied place.

Temporary Expansions (Bulge Classes)

- A temporary expansion or bulge class provides 30 places above the PAN
- The LA will provide Basic Entitlement (BE) funding for the relevant phase for any additional places prorated for the period September to March. This is on the basis that an additional FE will be funded at 30 places.
- There is no claw back of funding once the bulge class has passed through (lagged funding means that the bulge is funded through the formula for the year after it has gone).
- The policy funds places that are unoccupied at the October census at 30% of the pro-rated Basic Entitlement rate.

In Year Support - Funding for new class required

In-year support to new schools from the growth fund.

- The following will apply for a period of 7 years, or when a school reaches 90% of its NOR capacity, whichever is the sooner.
- If at any point during the financial year, the LA identifies an additional class is required above those already used in the varied numbers on roll (NOR), then the school will receive additional pro rata full year's funding of 30 pupils multiplied by the basic entitlement. This will in effect be a correction to the estimated NOR used in the APT submission.

Minor Variation to pupil numbers

The proposal is not to fund minor variations to pupil numbers.

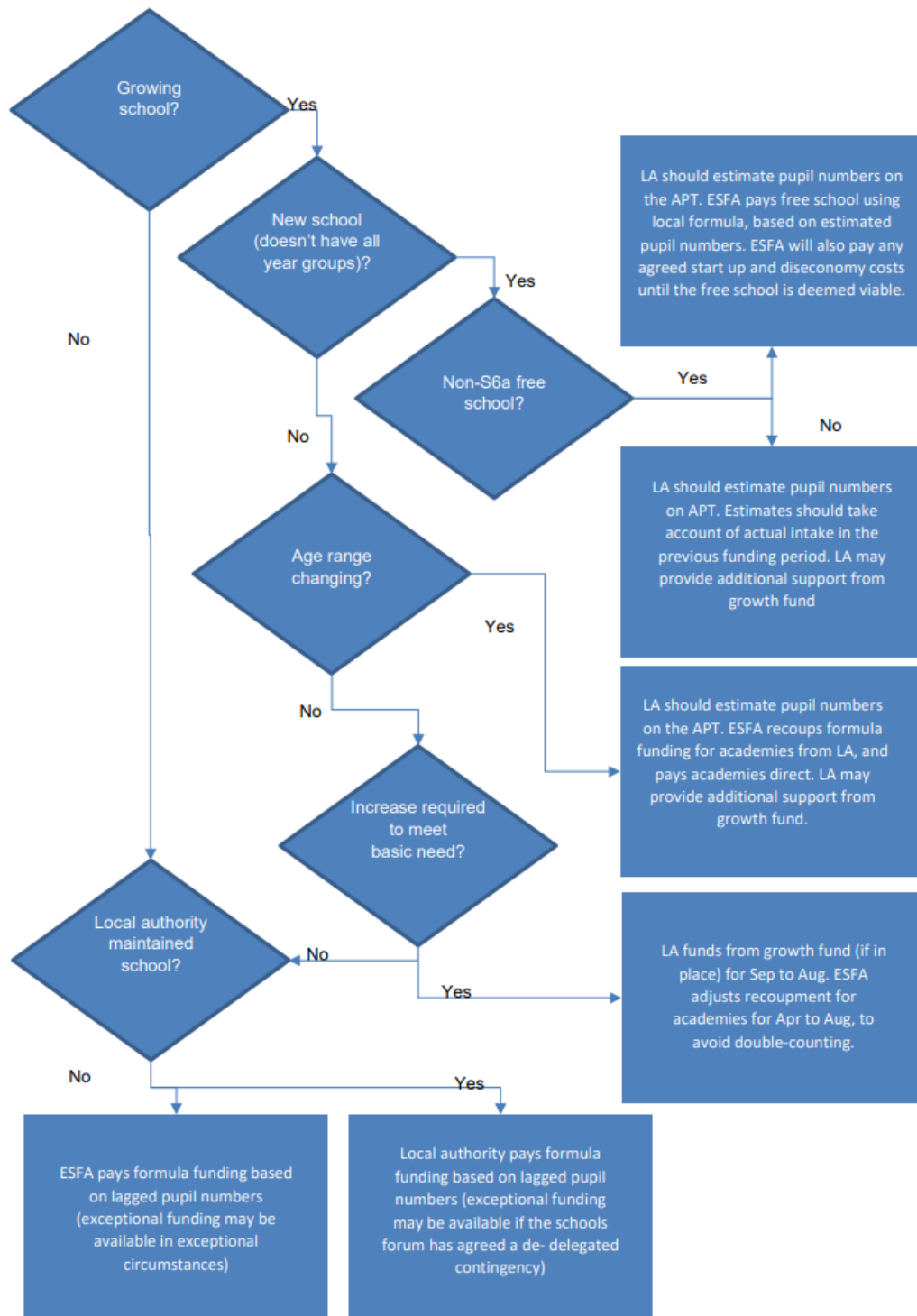
Falling Rolls Fund

There will be no falling rolls fund in 2023-24, this is no change from 2022-23.

Growth funding will not apply where a school:

- increases its PAN by choice but not agreed with the local authority as part of the process to meet basic need in the area;
- admits over PAN by choice (not to meet agreed basic need);
- admits pupils above a school's PAN as a consequence of appeal or error in the school admissions process;
- general growth due to popularity which is managed through lagged funding;
- is in financial difficulty and the LA has not agreed to an increase in the PAN

Growth Funding for Schools Explained



Proposed Forecast Explicit Growth Fund Requirement

Growth funding required to meet legacy place planning decisions from Sept 2019

School Name	Description	2022-23 Forecast £	2023-24 Forecast £	2024-25 Forecast £
Bournemouth School	1 FE Y7 from Sep 2019	75,676	79,380	
BSG	14 pupils Y7 from Sep 2019	18,522	37,044	
Cornerstone	2 FE Y7 from Sep 2019	226,464	158,760	158,760
Sub Total		320,662	275,184	158,760

Growth funding required from September 2022 onwards

School Name	Description	2022-23 Forecast £	2023-24 Forecast £	2024-25 Forecast £	Comments
Avonbourne Boys	1 FE (30 places) Sep 2024	23,814		79,380	Numbers did not exceed PAN in 2022/23. Projections indicate growth in 2024/25 when bulge class is required
Avonbourne Girls	1 FE (30 places) Sep 2024	23,814		79,380	Numbers did not exceed PAN in 2022/23. Projections indicate growth in 2024/25 when bulge class is required
Year 7 Bulge	1 FE (30 places) Christchurch area		79,380	79,380	This is a contingency in anticipation of numbers exceeding existing PANs
Year 2 Bulge	In Year growth to be found 1FE (30 places)	56,298	56,298		In Year growth prompted by an unexpected increased number of in year applications which exceed current admission levels.
Year 6 Bulge	In Year growth to be found 1FE (30 places)	56,298	56,298		
Contingency		32,439			
Sub Total		192,663	191,976	238,140	

TOTAL		513,325	467,160	396,900	
--------------	--	----------------	----------------	----------------	--

Notes

- The forecasts assume all places will be filled whereas where growth does not materialise only 30% of the rate for each of those unoccupied places is paid, based on the autumn census.
- The actual 2022-23 payments will be confirmed once the autumn 2021 census count is confirmed. The estimates provide a maximum for the actual payments each year.
- The forecast assumes 6.5 additional FE required each year for Sep 2022 and Sep 2023.
- In addition to the funding included in the table above, Livingstone Academy will receive implicit growth of approximately £0.6 million in 2022-23 and continuing for 3 years up to 2025-26 whilst the school fills its secondary phase; implicit growth will continue for another 3 years to 2028-29 for the primary phase growing year groups.

List of Consultation Questions

Question 1

Do you agree that Schools Forum should agree the transfer of surplus school block funding (lever a) to support the high needs budget?

Question 2

Do you agree that schools should contribute to the management of the high needs funding shortfall by contributing funding from their NFF allocations? (funding levers b-e)

Question 3

Do you agree that if a funding transfer is made beyond the level of surplus schools block funding that all mainstream schools should contribute funding from their NFF allocations? (all funding levers b-d)

Question 4

Do you agree that if a funding transfer is made beyond the level of surplus schools block funding that schools with funding increases beyond 0.5% (the level of the MFG and increase in the MPPFL in the NFF) should see gains capped to be more in line with increases for other schools? (funding lever e)

Question 5

Do you agree that if the NFF is unaffordable (without any transfer to high needs) that adjustments are made in accordance with paragraph 7.2?

Question 6

Do you support that the existing growth fund policy continues for 2023-24?

Question 7

Please provide any comments you would like to make concerning the budgets in the central school services block.

Question 8

Are there any further comments you would like to make about any issues within the scope of this consultation?

SCHOOL AND LOCAL AUTHORITY FUNDING GLOSSARY OF KEY NATIONAL AND LOCAL TERMS

ACRONYM	TITLE	DEFINITION
ACA	Area Cost Adjustment	A weighting applied by the Government to local government areas to reflect differences in the costs of inputs required, such as pay expenditure.
AP	Alternative Provision	Education for pupils: <ul style="list-style-type: none"> • Due to permanent exclusion, illness, or other reasons, would not otherwise receive a suitable education. • On a fixed term exclusion. • Being directed by schools to off-site provision to improve their behaviour or requiring a different curriculum offer.
APT	Authority Proforma Tool	The APT is the spreadsheet local authorities use to submit their agreed mainstream pre-16 schools block funding formula to the Education and Skills Funding Agency.
AWPU	Age Weighted Pupil Unit	Now replaced by the basic entitlement factor (see below)
BE	Basic Entitlement	Funding allocated within the local schools funding formula to reflect age group entitlement difference for primary and secondary aged pupils. A mandatory factor in the local schools funding formula termed Basic Entitlement.
CAP	Capping	Formula ceiling that can be set within the local schools funding formula to reduce increases for schools gaining in school budgets between years. This has to be set on a per pupil basis unique to each Local Authority and it cannot clawback more than is required in cash terms to finance the Minimum Funding Guarantee.
DSG	Dedicated Schools Grant	National grant allocated to fund the provision of all schools, providers and other central services. Its deployment and grant conditions are prescribed in The School and Early Years Finance (England) Regulations.
	Deprivation	Deprivation is a compulsory funding factor in local authorities' mainstream pre-16 schools block funding formula that directs funding to the most deprived pupils.
EAL	English as an Additional Language	This is an optional funding factor in local authorities' mainstream pre-16 schools block funding formula.
ESFA	Education & Skills Funding Agency	An executive agency of the DfE responsible for the funding of all state provided education from 2 to 19.
ESG	Education Services Grant	Previously paid by the ESFA on a per pupil basis to: <ul style="list-style-type: none"> • Local Authorities for retained duties for all maintained schools and academies. • Local Authorities for general duties for maintained schools only. • Academies directly for general duties.

ACRONYM	TITLE	DEFINITION
EYB	Early Years Block	That part of the DSG notionally allocated by the DfE for Early Years provision, covering free entitlement for 3 & 4 year olds, and disadvantaged 2 year olds
EYFSP	Early Years Foundation Stage Profile	National standards set by the DfE for the learning, development and care of children from birth to aged 5.
FSM	Free Schools Meals	Pupils can qualify for such support subject to meeting national benefits entitlement criteria. One of the deprivation factors in the local school funding formula, which must contain at least one deprivation measure.
FY	Financial Year	Local Authority year from 1 st April to 31 st March. Also funding year for maintained schools.
GAG	General Annual Grant	This is the term used to describe the revenue funding allocated to academies on an academic year basis.
HNB	High Needs Block	That part of the DSG for pupils requiring high needs provision and to fund central special needs support services.
IDACI	Income Deprivation Affecting Children Index	A national index of deprivation measuring in a local area the percentage of children under age 16 that live in low income households. One of the deprivation factors in the local school funding formula, which must contain at least one deprivation measure.
ISB	Individual Schools Budget	The part of the DSG delegated as budget shares to individual schools and providers.
KS1	Key Stage 1	School year groups Reception to Year 2 (Age 4 to 6).
KS2	Key Stage 2	School year groups Year 3 to Year 6 (Age 7 to 10).
KS3	Key Stage 3	School year groups Year 7 to Year 9 (Age 11 to 13).
KS4	Key Stage 4	School year groups Year 10 to Year 11 (Age 14 to 15).
KS5	Key Stage 5	School and FE provider year groups Year 12 to Year 13 (Age 16 to 18).
LAC	Looked After Child	A child in the care of a Local Authority.
	Lagged Funding	A term used to describe funding based on the previous year's schools census. E.g. funding for an institution's 2021-22 financial year was based on census data from the autumn 2020 census.
LPA	Low Prior Attainment	<p>Pupils designated as not reaching the required national standards as defined by the DfE:</p> <ul style="list-style-type: none"> • Primary – not achieving the expected level of development within the EYFSP (pre and post 2013). • Secondary – not reaching level 4 in KS2 English or Maths.

ACRONYM	TITLE	DEFINITION
	Local Schools Funding Formula	The methodology within the APT for calculating and allocating budget shares to all mainstream schools – maintained and academies – within the parameters and datasets prescribed by the DfE.
MFG	Minimum Funding Guarantee	Percentage set locally from 2018-19 within EFSA parameters to guarantee changes in school budgets between years on a per pupil basis cannot reduce below a prescribed level.
	Mobility	An optional funding factor in the local formula. It refers to pupils who did not start the school in August or September (or not in January for pupils joining in reception).
MPPFL	Minimum Per Pupil Funding Levels	Introduced as part of the NFF that allows a minimum per pupil funding rate to be used that incorporates pupil-led and school led funding.
NNDR	National Non-Domestic Rates	NNDR are business rates incurred by schools.
NFF	National Funding Formula	Process of allocating funding to LA's through a formulaic process based on the funding individual pupils within the area attract based on their personal characteristics. Currently the LA then decides how to distribute this funding through SBS's.
	Notional SEN	An amount determined by each Local Authority via proxy indicators for each school within the school budget share local schools funding formula to support SEN.
NOR	Number on Roll	Actual pupils at each school on the national designated termly census dates (January, May and October).
NMSS	Non-Maintained Special Schools	Schools for high needs pupils not maintained by Local Authorities and not in the fully Independent Sector
PAN	Published Admission Number	The number of new pupils that can be admitted at the start of each school year in the schools admission year group.
	Pupil Growth Fund	Subject to strict criteria, funding that can be operated outside of the local schools funding formula to support pupil growth for basic need, re-opening, diseconomy and reorganisation costs.
PNA	Pupil Number Adjustment	An adjustment process for academies that receive funding based on estimated pupil numbers, to make sure funding more accurately reflects the actual pupil numbers present during the year.
POG	Post-Opening Grant	Free schools, studio schools and university technical colleges (UTCs) are provided with a POG to reflect the additional costs of establishing a new publicly-funded school.
PP	Pupil Premium	Specific grant from the DfE allocated on national rates to support pupils eligible for FSM, service children, LAC and those adopted from care.

ACRONYM	TITLE	DEFINITION
PUF	Primary Unit of Funding	The Secondary per pupil amount of the DSG allocate by the DfE and used to calculate the total SB DSG. (See SUF for Secondary)
PVI	Private, Voluntary and Independent Providers	Non-maintained early years providers. The nationally prescribed free entitlement provision for deprived 2 year olds and 3 and 4 year olds of 15 or 30 hours weekly provision for 38 weeks is funding from the EYB DSG on actual take up.
SB	Schools Block	That part of the DSG allocated by the DfE for pupils in mainstream schools.
SBS	School budget share	SBS forms the majority of schools revenue funding and is calculated by ESFA using the funding factors determined by the local authority.
SSG	Supplementary School Grant	Additional funding allocated to mainstream schools and academies in the 2022 to 2023 financial year to provide support for the costs of the Health and Social Care Levy and wider costs
SUF	Secondary Unit of Funding	The Secondary per pupil amount of the DSG allocate by the DfE and used to calculate the total SB DSG. (See PUF for Primary)
UIFSM	Universal Infant Free School Meals	UIFSM grant is funding for schools to provide free school meals to all pupils in reception, years 1 and 2.

Note that not all the above are used in this document